

TRAP1 / Hsp75 Monoclonal Antibody

ORDERING INFORMATION

Catalog No.: 11136 (clone Trap1-6)

Size: 100ug in PBS (1mg/ml), pH 7.4,
50% glycerol, 0.09% sodium azide.

Purified by Protein G affinity
chromatography.

BACKGROUND

The molecular chaperone family of 90kDa heat shock proteins (Hsp90) is a highly conserved protein family that plays an important physiological role. Hsp90 is best known for its association with signal transduction processes. Tumor necrosis factor receptor-associated protein 1 (TRAP1) is a recently cloned homolog of Hsp90. Like Hsp90, TRAP1 is associated with numerous proteins that are involved in multiple pathways. Data indicates that TRAP1 is a mitochondrial matrix protein: it is localized in mitochondria of mammalian cells and contains a mitochondrial targeting presequence.

SPECIFICATION SUMMARY

Antigen: Recombinant human TRAP1

Host Species: Mouse

Antibody Class: IgG2a

SPECIFICITY

This antibody recognizes human TRAP1.
Other species have not been investigated.

APPLICATIONS

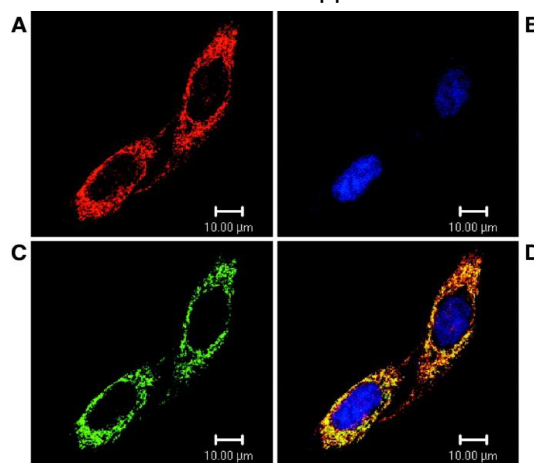
Immunoblotting: use at 1ug/ml. A band of ~75kDa is detected.

Immunocytochemistry: use at 0.1-1.0ug/ml.

Immunofluorescence: use at 1-10ug/ml.

Positive control: HeLa cells or lysate

These are recommended concentrations;
enduser should determine optimal
concentrations for their applications.



Localization of TRAP1 to mitochondria in PC-3M cells. (A) Staining of mitochondria with MitoTracker dye; (B) Staining of nuclei with DAPI; (C) Immunofluorescent staining of mitochondria with product no. 11134; (D) tricolor composite of images A-C.

DILUTION INSTRUCTIONS

Dilute in PBS or medium which is identical to that used in the assay system.

STORAGE AND STABILITY

This antibody is stable for at least one (1) year at -20°C. Avoid repeated freeze-thaw cycles.

For in vitro investigational use only. Not intended for diagnostic or therapeutic applications.