

GRP78 Monoclonal Antibody

ORDERING INFORMATION

Catalog No.: 11135 (clone 6H4-2G7)
Size: 100ug in PBS (2mg/ml), pH 7.4,
0.09% sodium azide. Purified by Protein
G affinity chromatography.

BACKGROUND

GRP78 is a ubiquitously expressed,
78kDa glucose-regulated protein
commonly referred to as an
immunoglobulin chain binding protein
(BiP). Categorized as stress response
proteins, BiPs play an important role in
folding and assembly of nascent proteins
and in scavenging of misfolded proteins in
the endoplasmic reticulum lumen.
Translation of BiP is directed by an
internal ribosomal entry site (IRES) in the
5'- nontranslated region of BiP mRNA. BiP
IRES activity increases when cells are
heat-stressed. GRP78 is also important in
maintenance of cell homeostasis and the
prevention of apoptosis. Levels of GRP78
protein are reduced in brains of
Alzheimer's disease patients.

SPECIFICATION SUMMARY

Antigen: His-tagged human GRP78
(accession no. NP_001156906.1)
Host Species: Mouse
Antibody Class: IgG1

*For in vitro investigational use only. Not
intended for diagnostic or therapeutic
applications.*

SPECIFICITY

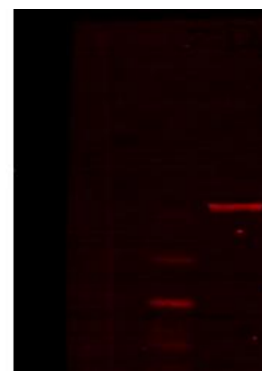
This antibody recognizes human GRP78.

APPLICATIONS

ELISA

Immunoblotting: use at 0.5-1.0ug/ml. A
band of ~78kDa is detected.

GRP78 →



These are recommended concentrations;
enduser should determine optimal
concentrations for their applications.
Positive control: HeLa cell lysate.

DILUTION INSTRUCTIONS

Dilute in PBS or medium which is identical
to that used in the assay system.

STORAGE AND STABILITY

This antibody is stable for at least one (1)
year at -20°C. Avoid repeated freeze-
thaw cycles.