

Anti-Hsp70/Hsc70 Monoclonal Antibody

ORDERING INFORMATION

Catalog No.: 11099

Format: 100ug Protein G-purified antibody in PBS, pH 7.4, 0.1% sodium azide.

BACKGROUND

Members of the Hsp70 family are molecular chaperones that function in protein folding, transport, maturation and degradation by binding to nascent polypeptide chains as well as partially folded protein intermediates and preventing their aggregation and misfolding. The 70kDa heat shock cognate protein, Hsc70, is closely related biochemically and biologically to Hsp70.

SPECIFICATION SUMMARY

Antigen: Chicken Hsp70/Hsp90 complex.

Accession no.: NP_001006686.1

Host Species: Mouse

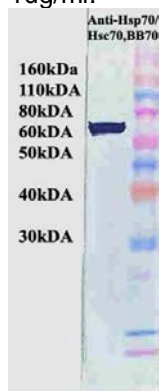
Clone no. BB70

Antibody Class: IgG2a

Specificity: This antibody detects 72 and 73kDa proteins corresponding to the predicted molecular masses of Hsp70 and Hsc70, respectively, on immunoblots of human, mouse, rat, rabbit, monkey, hamster, guinea pig, dog, bovine, sheep, pig, chicken yeast, fish, and *Xenopus* samples. This antibody recognizes the inducible and constitutive forms of Hsp70 and does not cross-react with Hsp90.

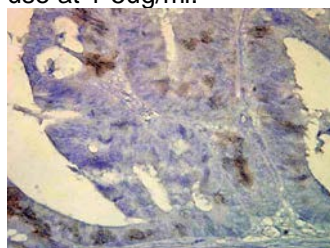
APPLICATIONS

Immunoblotting: use at 1ug/ml.

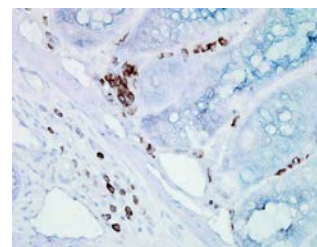


Detection of Hsp70 in HeLa cell lysate.

Immunohistochemistry: use at 1-5ug/ml.



Detection of Hsp70 in formalin-fixed human colon carcinoma.



Detection of Hsp70 in formalin-fixed inflamed mouse colon.

These are recommended concentrations. Endusers should determine optimal concentrations for their applications.

DILUTION INSTRUCTIONS

Dilute in PBS or medium that is identical to that used in the assay system.

STORAGE AND STABILITY

This antibody is stable for at least one (1) year at -20°C. Avoid repeated freezing and thawing.

For in vitro investigational use only. Not for use in therapeutic or diagnostic procedures.