

Anti-PHAP I (IN) Antibody

ORDERING INFORMATION

Catalog No.: 11082

Size: 100 ug IgG in PBS, pH 7.4, purified by immunoaffinity chromatography.

SPECIFICATION SUMMARY

Antigen: Synthetic peptide corresponding to amino acids near the carboxy terminus of human PHAP I (accession no. P39687).

Host Species: Rabbit

Stabilizers: None

Preservatives: 0.02% sodium azide

BACKGROUND

The PHAP proteins (tumor suppressor putative HLA-DR associated proteins) are important regulators of mitochondrial apoptosis. PHAP facilitates apoptosome-mediated caspase-9 activation to stimulate the mitochondrial apoptosis pathway. In addition, PHAP opposes both *Ras*- and *myc*- mediated cell transformation.

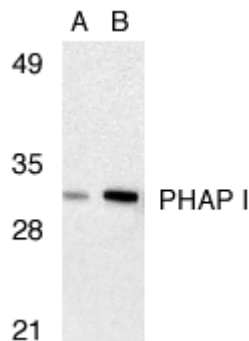
SPECIFICITY

This antibody recognizes human and mouse PHAP I (32kDa). The sequence of rat PHAP I is identical to human PHAP I.

For in vitro investigational use only. Not for use in therapeutic or diagnostic procedures.

APPLICATIONS

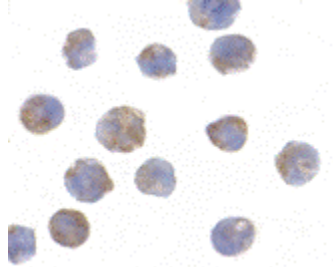
Immunoblotting: Use at 2-4 ug/ml.



Western blot analysis of PHAP I in Raji cell lysate with PHAP I antibody at 2µg/ml (lane A) and 4µg/ml (lane B).

Positive control: Raji cell lysate.

Immunocytochemistry: use at 2ug/ml.



Immunocytochemical staining of PHAP I in Raji cells with PHAP I antibody at 2ug/ml.

These are recommended concentrations. Enduser should determine optimal concentrations for their applications.

DILUTION INSTRUCTIONS

Dilute in PBS or medium which is identical to that used in the assay system.

STORAGE AND STABILITY

This antibody is stable for at least one (1) year at -20°C. Avoid multiple freeze-thaw cycles.