

Anti-Caspase-4 Antibody

ORDERING INFORMATION

Catalog No.: 11025

Size: 100ug IgG in PBS, pH 7.4, purified by immunoaffinity chromatography.

BACKGROUND

Caspases are a family of cysteine proteases. Caspase-4 was initially identified as a homologous protein to Caspase-1 and the *C. elegans* Ced-3 which could induce apoptosis in transfected cells. More recent studies have shown that it can be activated by ER stress and has been suggested to be involved in multiple neuronal pathologies such as Alzheimer's disease.

SPECIFICATION SUMMARY

Antigen: Synthetic peptide corresponding to 16 amino acids at the amino-terminus of human Caspase-4 (accession no. AAA86890).

Host Species: Rabbit

Stabilizers: None

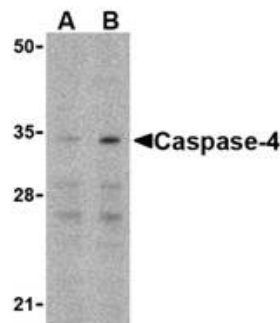
Preservatives: 0.02% sodium azide.

SPECIFICITY

This antibody recognizes human and mouse Caspase-4 (36kDa).

APPLICATIONS

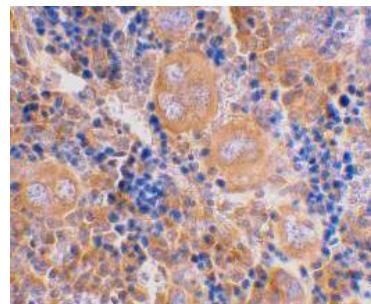
Immunoblotting: use at 1ug/ml.



Western blot analysis of Caspase-4 in Ramos cells with caspase-4 antibody at (A) 0.5 and (B) 1µg/ml.

Positive control: Ramos cell lysate.

Immunohistochemistry: use at 2ug/ml.



Immunohistochemical staining of mouse spleen with Caspase-4 antibody at 2µg/ml.

These are recommended concentrations. Enduser should determine optimal concentrations for their applications.

DILUTION INSTRUCTIONS

Dilute in PBS or medium which is identical to that used in the assay system.

STORAGE AND STABILITY

This antibody is stable for at least one (1) year at -20°C. Avoid multiple freeze-thaw cycles.

For in vitro investigational use only. Not for use in therapeutic or diagnostic procedures.