

Anti-PUMA (NT) Antibody

ORDERING INFORMATION

Catalog No.: 11008

Size: 100ug IgG in PBS, pH 7.4, purified by immunoaffinity chromatography.

BACKGROUND

PUMA (p53 Upregulated Modulator of Apoptosis) is a pro-apoptotic Bcl-2 family member that encodes two BH3 domain-containing proteins, PUMA- α and PUMA- β . PUMA proteins bind Bcl-2, localize to mitochondria, and induce cytochrome c release and apoptosis in response to p53.

SPECIFICATION SUMMARY

Antigen: Synthetic peptide corresponding to aa 2-16 of human PUMA- α (accession no. NP_055232).. This sequence is identical in mouse PUMA- α .

Host Species: Rabbit

Stabilizers: None

Preservatives: 0.02% sodium azide

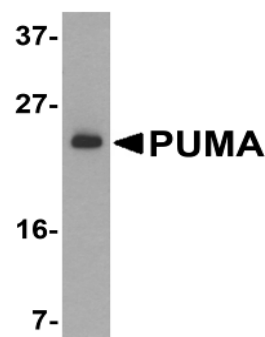
SPECIFICITY

This antibody recognizes human and mouse PUMA (23kDa).

For in vitro investigational use only. Not for use in therapeutic or diagnostic procedures.

APPLICATIONS

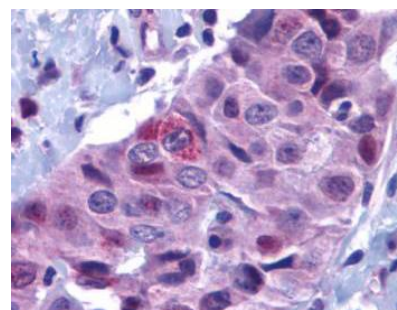
Immunoblotting: use at 2ug/ml.



Western blot analysis of PUMA in K562 cell lysate with PUMA antibody at 2 μ g/ml.

Positive control: K562 cell lysate.

Immunohistochemistry: use at 10ug/ml.



Immunohistochemical staining of PUMA in human breast carcinoma with PUMA antibody at 10 μ g/ml.

These are recommended concentrations. Enduser should determine optimal concentrations for their applications.

DILUTION INSTRUCTIONS

Dilute in PBS or medium which is identical to that used in the assay system.

STORAGE AND STABILITY

This antibody is stable for at least one (1) year at -20°C. Avoid multiple freeze-thaw cycles.