

Anti-PUMA (CT) Antibody

ORDERING INFORMATION

Catalog No.: 11007

Size: 100ug IgG in PBS, pH 7.4, purified by immunoaffinity chromatography.

BACKGROUND

PUMA (p53 Upregulated Modulator of Apoptosis) is a pro-apoptotic Bcl-2 family member that encodes two BH3 domain-containing proteins, PUMA- α and PUMA- β . PUMA proteins bind Bcl-2, localize to mitochondria, and induce cytochrome c release and apoptosis in response to p53.

SPECIFICATION SUMMARY

Antigen: Synthetic peptide corresponding to aa 180-193 of human PUMA- α (accession no NP_055232). This sequence is identical in human PUMA- α and PUMA- β .

Host Species: Rabbit

Stabilizers: None

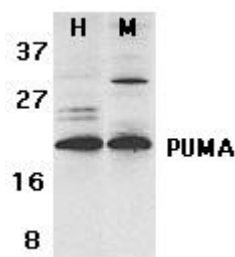
Preservatives: 0.02% sodium azide

SPECIFICITY

This antibody recognizes human and mouse PUMA (23kDa). A lower molecular weight band at 16kDa is detected in MOLT4 and U937 cell lysates and probably represents the PUMA- β protein.

APPLICATIONS

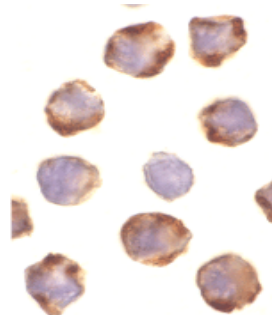
Immunoblotting: use at 2ug/ml.



Western blot analysis of PUMA in human (H) K562 and mouse (M) NIH/3T3 cell lysates with PUMA antibody at 2 μ g/ml.

Positive control: K562 cell lysate.

Immunocytochemistry: use at 1ug/ml.



Immunocytochemical staining of PUMA in K562 cells with PUMA antibody at 1 μ g/ml.

These are recommended concentrations. Enduser should determine optimal concentrations for their applications.

DILUTION INSTRUCTIONS

Dilute in PBS or medium which is identical to that used in the assay system.

STORAGE AND STABILITY

This antibody is stable for at least one (1) year at -20°C. Avoid multiple freeze-thaw cycles.

For in vitro investigational use only. Not for use in therapeutic or diagnostic procedures.