

Anti-Livin Antibody

ORDERING INFORMATION

Catalog No.: 11006

Size: 100ug IgG in PBS, pH 7.4, purified by immunoaffinity chromatography.

BACKGROUND

Apoptosis is prevented by the inhibitor of apoptosis (IAP) proteins. A novel member in the IAP protein family has been identified and designated Livin and KIAP for kidney IAP. Livin/KIAP contains a single baculoviral IAP repeat (BIR) domain and a RING finger domain and has two isoforms termed Livin-a and Livin-b. Transfection of Livin in cells results in protection from apoptosis induced by FADD, BAX, RIP, RIP3 and DR6. Livin has direct interaction with several caspases including caspase-3, -7, and -9. Livin inhibits the activation of caspase-9 induced by Apaf-1, cytochrome c, and dATP. The two isoforms of Livin appear to have different functions and tissue distributions.

SPECIFICATION SUMMARY

Antigen: Peptide corresponding to aa 264-280 of the short form and aa 281-298 of the long form of human Livin (accession no. NP_071444).

Host Species: Rabbit

Stabilizers: None

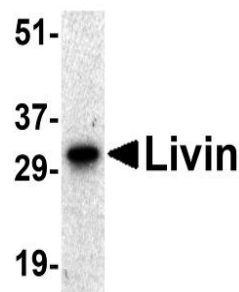
Preservatives: 0.02% sodium azide

SPECIFICITY

This antibody recognizes human Livin (33kDa).

APPLICATIONS

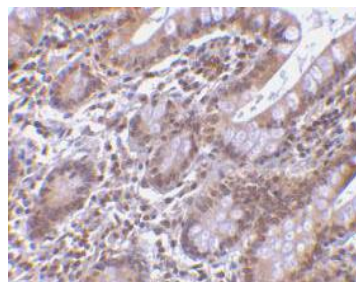
Immunoblotting: use at 0.5-1.0ug/ml.



Western blot analysis of Livin expression in human Raji cell lysate with Livin antibody at 0.5ug/ml.

Positive control: Raji cell lysate.

Immunohistochemistry: use at 5ug/ml.



Immunohistochemical staining of Livin in human small intestine with Livin antibody at 5ug/ml.

DILUTION INSTRUCTIONS

Dilute in PBS or medium which is identical to that used in the assay system.

STORAGE AND STABILITY

This antibody is stable for at least one (1) year at -20°C. Avoid multiple freeze-thaw cycles.

For in vitro investigational use only. Not for use in therapeutic or diagnostic procedures.