

Anti-ILP-2 Antibody

ORDERING INFORMATION

Catalog No.: 11005

Size: 100ug IgG in PBS, pH 7.4, purified by immunoaffinity chromatography.

BACKGROUND

Apoptosis is triggered by a variety of stimuli including members in the TNF family and prevented by the inhibitor of apoptosis (IAP) proteins. IAP proteins form a conserved gene family including IAP, XIAP/ILP-1/MIHA, and Livin/KIAP that bind to and inhibit specific proteases. A novel member in the IAP protein family has been identified and designated ILP-2 for IAP-like protein-2 (1). ILP-2 has high homology to ILP-1, but is encoded by a distinct gene. ILP-2, unlike ILP-1, has no inhibitory effect on Fas and TNF induced apoptosis, but potently inhibits apoptosis induced by overexpression of Bax or by coexpression of caspase-9 with Apaf-1. ILP-2 interacts with the processed caspase-9.

SPECIFICATION SUMMARY

Antigen: Peptide corresponding to aa 2-13 of human ILP-2 (accession no. NP_203127).

Host Species: Rabbit

Stabilizers: None

Preservatives: 0.02% sodium azide

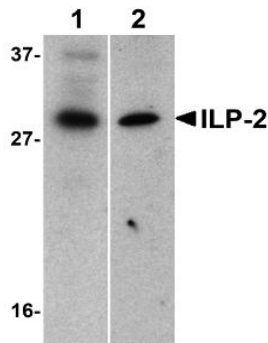
SPECIFICITY

This antibody recognizes human, mouse, and rat ILP-2 (33kDa).

For in vitro investigational use only. Not for use in therapeutic or diagnostic procedures.

APPLICATIONS

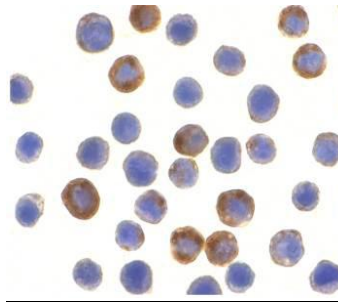
Immunoblotting: use at 1ug/ml.



Western blot analysis of ILP-2 in human HepG2 (lane 1) and MOLT4 (lane 2) cell lysates with ILP-2 antibody at 1ug/ml.

Positive control: HepG2 or MOLT4 cell lysates.

Immunocytochemistry: use at 10ug/ml.



Immunocytochemical staining of ILP-2 in HepG2 cells with ILP-2 antibody at 10ug/ml.

These are recommended concentrations. Enduser should determine optimal concentrations for their applications.

DILUTION INSTRUCTIONS

Dilute in PBS or medium which is identical to that used in the assay system.

STORAGE AND STABILITY

This antibody is stable for at least one (1) year at -20°C. Avoid multiple freeze-thaw cycles.