

Anti-EndoG Antibody

ORDERING INFORMATION

Catalog No.: 11004

Size: 100ug IgG in PBS, pH 7.4, purified by immunoaffinity chromatography.

SPECIFICATION SUMMARY

Antigen: Peptide corresponding to aa 55-70 of human EndoG (accession no. NP_004426).

Host Species: Rabbit

Stabilizers: None

Preservatives: 0.02% sodium azide

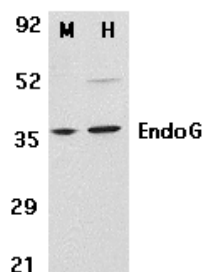
SPECIFICITY

This antibody recognizes human, mouse, and rat EndoG (Endonuclease G) an enzyme that is activated by apoptotic stimuli and is able to induce nucleosomal fragmentation of DNA independently of caspase and DFF/CAD. EndoG is a mitochondria-specific nuclease that translocates to the nucleus and cleaves chromatin DNA during apoptosis.

For in vitro investigational use only. Not for use in therapeutic or diagnostic procedures.

APPLICATIONS

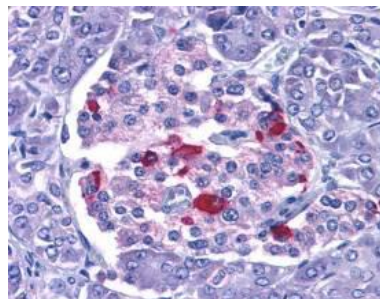
Immunoblotting: use at 1-2ug/ml. A band of 35kDa is detected.



Western blot analysis of EndoG in mouse (M) 3T3 and human (H) HepG2 cell lysates with EndoG antibody at 2µg/ml.

Positive control: HepG2 cell lysate.

Immunohistochemistry: use at 10-15ug/ml



Immunohistochemical staining of EndoG in human pancreas with EndoG antibody at 15µg/ml.

These are recommended concentrations. Enduser should determine optimal concentrations for their applications

DILUTION INSTRUCTIONS

Dilute in PBS or medium which is identical to that used in the assay system.

STORAGE AND STABILITY

This antibody is stable for at least one (1) year at -20°C. Avoid multiple freeze-thaw cycles.