

Anti-CARD9 Antibody

ORDERING INFORMATION

Catalog No.: 11003

Size: 100ug IgG in PBS, pH 7.4, purified by immunoaffinity chromatography.

SPECIFICATION SUMMARY

Antigen: Peptide corresponding to aa 521-536 of human CARD9 (accession no. AF31187).

This sequence differs from that of rat CARD9 by two amino acids.

Host Species: Rabbit

Stabilizers: None

Preservatives: 0.02% sodium azide

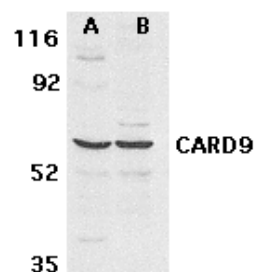
SPECIFICITY

This antibody recognizes human CARD9, a novel CARD (Caspase Recruitment Domain)-containing protein that interacts with the CARD activation domain of Bcl-10. CARD9 associates with Bcl-10 to form a complex within cells. CARD9 induces apoptosis and activates NF- κ B.

For in vitro investigational use only. Not for use in therapeutic or diagnostic procedures.

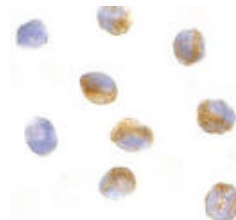
APPLICATIONS

Immunoblotting: use at 2-3ug/ml. A band of 59kDa is detected.



Western blot analysis of CARD9 expression in human MDA-MB-361 (A) and PC-3 (B) cell lysate with CARD9 antibody at 2.5 μ g/ml.

Immunocytochemistry: use at 10ug/ml.



Immunocytochemical staining of CARD9 in K562 cells with CARD9 antibody at 10 μ g/ml.

These are recommended concentrations.

Enduser should determine optimal concentrations for their applications.

Positive control: PC-3 cell lysate.

DILUTION INSTRUCTIONS

Dilute in PBS or medium which is identical to that used in the assay system.

STORAGE AND STABILITY

This antibody is stable for at least one (1) year at -20°C. Avoid multiple freeze-thaw cycles.