

## Anti-ARTS Antibody

### ORDERING INFORMATION

**Catalog No.:** 11000

**Size:** 100ug IgG in PBS, pH 7.4, purified by immunoaffinity chromatography.

### SPECIFICATION SUMMARY

**Antigen:** Peptide corresponding to aa 3-14 of human ARTS.

**Host Species:** Rabbit

**Stabilizers:** None

**Preservatives:** 0.02% sodium azide

### SPECIFICITY

This antibody recognizes human ARTS (Apoptosis Related Protein in TGF- $\beta$  Signaling Pathway), a novel mito-chondrial septin-like protein. ARTS translocates to the cell nucleus when apoptosis occurs. It enhances apoptosis induced by TGF- $\beta$  and other inducers of apoptosis, such as TNF- $\alpha$  and Fas ligand.

### DILUTION INSTRUCTIONS

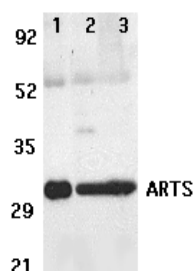
Dilute in PBS or medium which is identical to that used in the assay system.

### STORAGE AND STABILITY

This antibody is stable for at least one (1) year at -20°C. Avoid multiple freeze-thaw cycles.

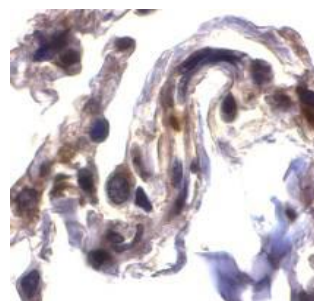
### APPLICATIONS

**Immunoblotting:** use at 2ug/ml. A band of 32 kDa is detected.



Western blot analysis of ARTS expression in human lung (lane 1), spleen (lane 2), and kidney (lane 3) tissue lysates with ARTS antibody at 2 $\mu$ g/ml.

**Immunohistochemistry:** use at 2ug/ml.



Immunohistochemical staining of ARTS in human lung tissue with ARTS antibody at 2 $\mu$ g/ml.

These are recommended concentrations. Enduser should determine optimal concentrations for their applications.

*Positive control:* Human lung, kidney, or spleen lysates.

*For in vitro investigational use only. Not for use in therapeutic or diagnostic procedures.*