

Prolylcarboxypeptidase (PRCP) Polyclonal Antibody

ORDERING INFORMATION

Catalog No.: 13920
Size: 100ul (0.7mg/ml)
Format: Antibody purified by recombinant protein affinity chromatography in PBS, 0.05% sodium azide, 50% glycerol.

BACKGROUND

Prolylcarboxypeptidase (PRCP) cleaves C-terminal amino acids linked to a proline if proline has a protected amino group or is part of a peptide chain. As a lysosomal enzyme, it has a sharp acid pH optimum with shorter substrates, but with longer peptides, some activity is retained at neutral pH. PRCP is found in a variety of human cells, including white blood cells, fibroblasts, and endothelial cells, and organs such as kidney and lung, and it is excreted in urine. Because angiotensins II and III share a common C terminus (-pro-phe-OH), and are substrates for PRCP, prolylcarboxypeptidase has also been referred to as angiotensinase C.

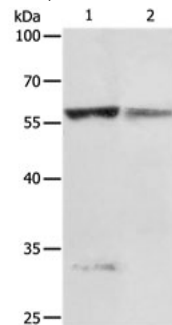
SPECIFICATION SUMMARY

Antigen: Recombinant fusion protein corresponding to aa 46-317 of human PRCP.
Accession no.: O43242
Gene ID: 5709
Host Species: Rabbit
Specificity: Human PRCP.

APPLICATION

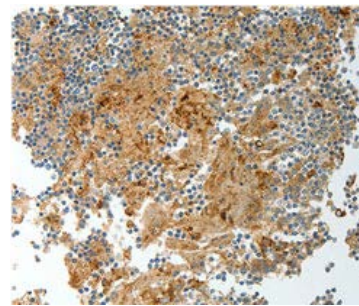
ELISA. Endusers should determine optimal antibody concentrations for their samples and assay formats.

Immunoblotting: use at dilutions of 1:200-1:1,000. A band of ~56kDa is detected.



Detection of PRCP in (1) Jurkat cell lysate and (2) human fetal liver lysate with #13920 diluted 1:200.

IHC: use at dilutions of 1:20-1:100.



Detection of PRCP in paraffin-embedded human tonsil with #13920 diluted 1:20.

These are recommended dilutions. Endusers should determine optimal dilutions for their applications.

STORAGE AND STABILITY

This antibody is stable for at least one (1) year at -20°C. Store product in appropriate aliquots to avoid multiple freeze-thaw cycles.

For in vitro investigational use only. Not for use in therapeutic or diagnostic procedures.