

## PMS2 Monoclonal Antibody

### ORDERING INFORMATION

Catalog No.	Clone No.	Size
34078	G412.1	100ul

**Format:** Purified antibody in Tris buffer, pH 7.3-7.7, 1% BSA, <0.1% sodium azide.

### BACKGROUND

Postmeiotic Segregation Increased 2 (PMS2) is a DNA repair protein involved in mismatch repair. Mutations and deficiencies in the PMS2 gene have been linked to microsatellite instability, malignancies such as hereditary nonpolyposis colorectal cancer, and endometrial cancer. Expression levels of the PMS2 protein may be useful as a screening tool for Lynch syndrome after a colorectal cancer diagnosis.

### DESCRIPTION

**Antigen:** Recombinant human PMS2.

**Accession No.:** P54278

**Gene ID:** 5395

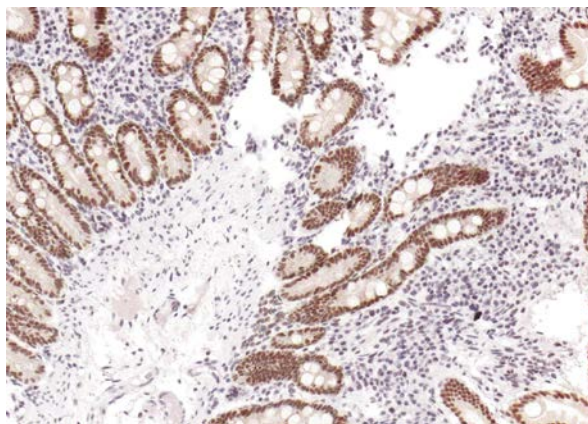
**Host:** Mouse

**Antibody subtype:** IgG1

**Specificity:** Human PMS2. Reactivity with other species has not been investigated.

### APPLICATIONS

**Immunohistochemistry:** use at a dilution of 1:100-1:200 on formalin-fixed, paraffin-embedded samples after heat-induced epitope retrieval at pH 9 for 10-30 minutes.



Detection of PMS2 in human duodenum with #34078 diluted 1:100-1:200.

### STORAGE AND STABILITY

Store at 2-8°C. Do not freeze.

*For in vitro investigational use only. Not for use in diagnostic or therapeutic applications.*