

MLH1 Monoclonal Antibody

ORDERING INFORMATION

Catalog No.	Clone No.	Size
34077	G409.1	100ul

Format: Purified antibody in Tris buffer, pH 7.3-7.7, 1% BSA, <0.1% sodium azide.

BACKGROUND

MutL Homolog 1 (MLH1) is a protein involved in the mismatch-repair pathway. This protein is commonly associated with hereditary non-polyposis colorectal cancer because the MLH1 gene is frequently mutated in patients with this cancer. Studies have shown MLH1 to be deficient in a high percentage of patients with microsatellite instability as well as endometrial and ovarian cancers. Anti-MLH1 can be useful in the detection of MLH1 in a number of normal and neoplastic tissues and for identifying a loss of MLH1 in tumors that are microsatellite-unstable.

DESCRIPTION

Antigen: Recombinant human MLH1.

Accession No.: P40692

Gene ID: 4292

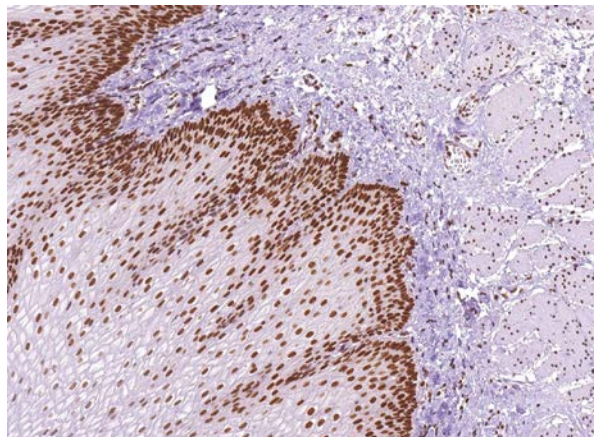
Host: Mouse

Antibody subtype: IgG2a

Specificity: Human MLH1. Reactivity with other species has not been investigated.

APPLICATIONS

Immunohistochemistry: use at a dilution of 1:100-1:200 on formalin-fixed, paraffin-embedded samples after heat-induced epitope retrieval at pH 9 for 10-30 minutes.



Detection of MLH1 in human esophagus with #34077 diluted 1:100-1:200.

STORAGE AND STABILITY

Store at 2-8°C. Do not freeze.

For in vitro investigational use only. Not for use in diagnostic or therapeutic applications.