

## MSH6 Monoclonal Antibody

### ORDERING INFORMATION

Catalog No.	Clone No.	Size
34076	G006.1	100ul

**Format:** Purified antibody in Tris buffer, pH 7.3-7.7, 1% BSA, <0.1% sodium azide.

### BACKGROUND

MutS Homolog 6 (MSH6) is a protein involved in the mismatch-repair pathway. This protein is commonly associated with hereditary non-polyposis colorectal cancer, and mutations in this gene are correlated with the development of sporadic colorectal carcinoma. Studies have shown that mutations in MSH6, when co-indicated with mutations in MSH1 and MSH2, contribute to the development of sporadic colorectal carcinoma.

### DESCRIPTION

**Antigen:** Recombinant human MSH6.

**Accession No.:** P52701

**Gene ID:** 2956

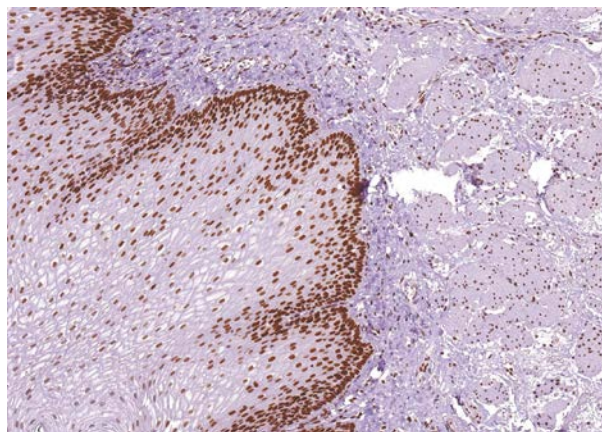
**Host:** Mouse

**Antibody subtype:** IgG1

**Specificity:** Human MSH6. Reactivity with other species has not been investigated.

### APPLICATIONS

**Immunohistochemistry:** use at a dilution of 1:100-1:200 on formalin-fixed, paraffin-embedded samples after heat-induced epitope retrieval at pH 9 for 10-30 minutes.



Detection of MSH6 in human esophagus with #34076 diluted 1:100-1:200.

### STORAGE AND STABILITY

Store at 2-8°C. Do not freeze.

*For in vitro investigational use only. Not for use in diagnostic or therapeutic applications.*