

MSH2 Monoclonal Antibody

ORDERING INFORMATION

Catalog No.	Clone No.	Size
34075	G410.1	100ul

Format: Purified antibody in Tris buffer, pH 7.3-7.7, 1% BSA, <0.1% sodium azide.

BACKGROUND

MutS Homolog 2 (MSH2) is a protein involved in the mismatch-repair pathway. This protein is commonly associated with hereditary non-polyposis colorectal cancer, and mutations in this gene are correlated with the development of sporadic colorectal carcinoma. Expression levels of MSH2 are abnormally low in a high percentage of patients with microsatellite instability as well as endometrial and ovarian cancers. Anti-MSH2 antibody may be useful in the detection of the protein in a number of normal and neoplastic tissues and for identifying a loss of MSH2 in tumors that are microsatellite-unstable.

DESCRIPTION

Antigen: Recombinant human MSH2.

Accession No.: P43246

Gene ID: 4436

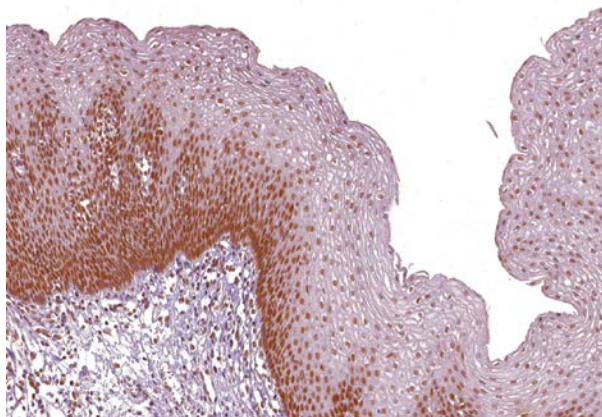
Host: Mouse

Antibody subtype: IgG2b

Specificity: Human MSH2. Reactivity with other species has not been investigated.

APPLICATIONS

Immunohistochemistry: use at a dilution of 1:100-1:200 on formalin-fixed, paraffin-embedded samples after heat-induced epitope retrieval at pH 6 for 10-30 minutes.



Detection of MSH2 in human esophagus with #34075 diluted 1:100-1:200.

STORAGE AND STABILITY

Store at 2-8°C. Do not freeze.

For in vitro investigational use only. Not for use in diagnostic or therapeutic applications.