

KDEL Receptor Monoclonal Antibody

ORDERING INFORMATION

Catalog no. 11078 (clone KR-10)

Format: 100ug (1mg/ml) Protein G-purified antibody in PBS, pH 7.2, 50% glycerol, 0.09% sodium azide.

BACKGROUND

KDEL receptor, an integral membrane protein, facilitates the retrieval of soluble endoplasmic reticulum (ER) luminal proteins bearing the four amino acid retention motif KDEL from the Golgi apparatus. The sequence of KDEL receptor is very similar to that of the yeast protein Erd2p, a receptor for proteins containing the tetrapeptide HDEL, the yeast ER retention signal. KDEL receptors interact with GAP (GTPase-activating protein) of ARF1, a small GTP-binding protein involved in COPI-dependent vesicle transport. KDEL receptors may recruit cytosolic ARF1 to membranes and regulate vesicle budding.

SPECIFICATION SUMMARY

Antigen: Synthetic peptide corresponding to aa 192-212 of bovine KDEL receptor conjugated to KLH.

Gene ID: 68137

Accession no.: NP_598711.1, Q99JH8

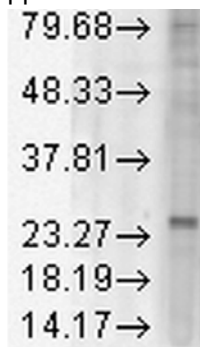
Host Species: Mouse

Antibody Class: IgG1

Species Reactivity: Human, monkey, mouse, rat, hamster, rabbit, porcine, bovine, ovine, canine, chicken, *Drosophila* and *Xenopus*.

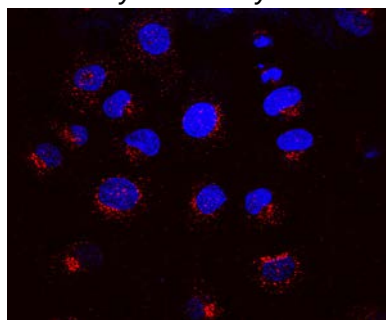
APPLICATIONS

Western blot: use at 1ug/ml. A band of approx. 25kDA is detected.



Detection of KDEL receptor in rat tissue lysate with #11078 at 1ug/ml.

Immunocytochemistry: use at 1ug/ml.



Immunofluorescent detection of KDEL receptor on NRK cells with #11078 at 1ug/ml.

These are recommended concentrations. Endusers should determine optimal concentrations for their applications.

STORAGE AND STABILITY

This antibody is stable for at least one (1) year at -20°C.

For in vitro investigational use only. Not for use in therapeutic or diagnostic procedures.