

## p53R2 Polyclonal Antibody

### ORDERING INFORMATION

**Catalog No.:** 56224

**Format:** 100ug (1mg/ml) peptide affinity-purified IgG in PBS, pH 7.4, 0.02% sodium azide.

### BACKGROUND

p53R2 (also known as RRM2B ribonucleotide reductase regulatory TP53 inducible subunit M2B) is a p53 inducible gene that contains a p53 binding sequence and encodes a subunit of the enzyme ribonucleotide reductase. p53R2 is induced by agents that cause DNA damage, such as UV and  $\gamma$ -irradiation. The product of the p53R2 gene is directly involved in the p53 checkpoint for repair of damaged DNA.

### SPECIFICATION SUMMARY

**Antigen:** Peptide corresponding to aa 2-17 of human p53R2.

**Host Species:** Rabbit

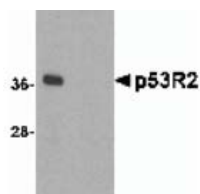
**Gene ID:** 50484

**Accession no.:** Q7LG56

**Specificity:** This antibody recognizes an epitope at the N-terminus of human, mouse, and rat p53R2.

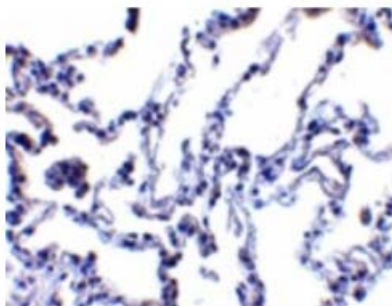
### APPLICATIONS

**Immunoblotting:** use at 1ug/ml. A band of ~39kDa is detected.



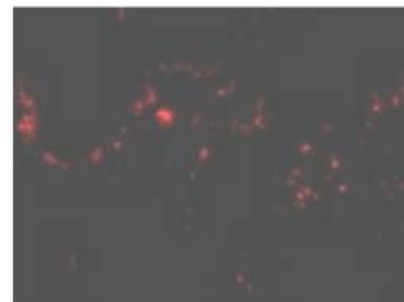
Detection of p53R2 in 3T3 cell lysate with #56224 at 1ug/ml in the absence (left lane) or presence (right lane) of blocking peptide.

**IHC:** use at 1ug/ml.



Detection of p53R2 in human lung with #56224 at 1ug/ml.

**Immunofluorescence:** use at 20ug/ml.



Detection of p53R2 in human lung with #56224 at 20ug/ml.

### DILUTION INSTRUCTIONS

Dilute in PBS or medium that is identical to that used in the assay system.

### STORAGE AND STABILITY

This antibody is stable for at least one (1) year at -20°C. Avoid multiple freeze-thaw cycles.

*For in vitro investigational use only. Not for use in therapeutic or diagnostic procedures.*