

Ataxin-1 Monoclonal Antibody

ORDERING INFORMATION

Catalog no.: 56550 (clone S76-8)

Format: 100ug (1mg/ml) Protein G-purified antibody in PBS, pH 7.4, 0.1% sodium azide, 50% glycerol.

BACKGROUND

Ataxin-1 is a member of the ATXN1 protein family. It is a neurodegenerative disorder protein that is believed to play a role in metabolism of RNA. A mutation of Ataxin-1 causes spinocerebellar ataxia type-1 (SCA1), a progressive neurodegenerative disease that primarily affects Purkinje cells in the brain stem and cerebellum. Ataxin-1 is ubiquitously expressed except in brain where it is limited to populations of neurons.

SPECIFICATION SUMMARY

Antigen: Synthetic peptide corresponding to aa 164-197 (ATTPSQRSQLEAYSTLLAN-MGSLSQAPGHKVEPP) of mouse Ataxin-1. This sequence is 100% identical to rat and 88% identical to human Ataxin-1.

Accession no.: NP_001186233.1, P54254

Gene ID: 20238

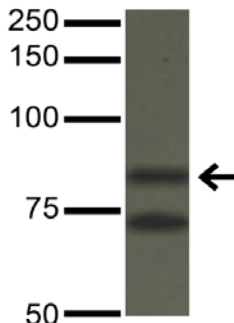
Host Species: Mouse

Antibody Class: IgG2b

Specificity: This antibody recognizes human, mouse, and rat Ataxin-1.

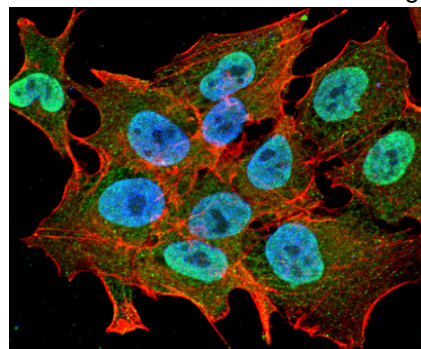
APPLICATIONS

Immunoblotting: use at 1-5ug/ml. A band of ~85kDa is detected.



Detection of Ataxin-1 in COS-1 cells transfected with Ataxin-1 with #56550 at 5ug/ml.

Immunofluorescence: use at 10ug/ml.



Detection of Ataxin-1 in Neuroblastoma cell line SK-N-BE with #56550 at 10ug/ml: DAPI (blue) nuclear stain, Texas Red F actin stain, FITC (green) Ataxin-1 stain.

These are recommended concentrations. Enduser should determine optimal concentrations for their application.

DILUTION INSTRUCTIONS

Dilute in PBS or medium that is identical to that used in the assay system.

Ataxin-1 Monoclonal Antibody

STORAGE AND STABILITY

This product is stable for at least one (1) year at -20°C.

For in vitro investigational use only. Not intended for therapeutic or diagnostic procedures.