

ADAM22 (extracellular) Monoclonal Antibody

ORDERING INFORMATION

Catalog No.: 56527 (clone S57-2)
Size: 100ug in PBS (1mg/ml), pH 7.4,
50% glycerol, 0.09% sodium azide.
Purified by Protein G affinity
chromatography.

BACKGROUND

ADAM22 is a member of the ADAM gene family which bind integrin and may play a role in cell-to-cell or cell-to-matrix interactions. ADAM22 is unique in that it is only observed in the nervous system and predominantly in brain. ADAM22 is attached by cytoskeletal scaffolds to the postsynaptic density and is a receptor for LGI1.

SPECIFICATION SUMMARY

Antigen: Fusion protein corresponding to aa 444-526, the extracellular disintegrin domain, of mouse ADAM22 (accession no. Q9R1V6).

Host Species: Mouse

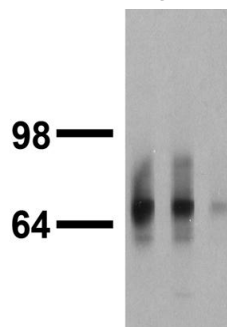
Antibody Class: IgG1

SPECIFICITY

This antibody recognizes mouse, rat, and human (weak) ADAM22. It does not cross-react with ADAM11.

APPLICATIONS

Immunoblotting: use at 1ug/ml. Predicted molecular weight is ~90kDa.



#56527 on adult rat brain membrane.

Positive control: Rat brain lysate.

These are recommended concentrations. Endusers should determine optimal concentrations for their applications.

DILUTION INSTRUCTIONS

Dilute in PBS or medium which is identical to that used in the assay system.

STORAGE AND STABILITY

This antibody is stable for at least one (1) year at -20°C. Avoid repeated freeze-thaw cycles.

For in vitro investigational use only. Not intended for diagnostic or therapeutic applications.