

## Acetylated Lysine Polyclonal Antibody

### ORDERING INFORMATION

**Catalog No.:** 56498

**Size:** 400ul purified rabbit immunoglobulin (250ug/ml) in phosphate-buffered saline, pH 7.0 and 50% glycerol.

### BACKGROUND

Post-translational modifications of proteins play critical roles in the regulation and function of many biological processes. A common post-transcriptional modification of lysine is acetylation. The conserved amino-terminal domains of the four core histones (H2A, H2B, H3, and H4) contain lysines that are acetylated by histone acetyltransferases (HATs) and deacetylated by histone deacetylases (HDACs). Regulation of protein acetylation status is impaired in cancer and polyglutamine diseases, and HDACs have become promising targets for anti-cancer drugs currently in development.

### SPECIFICATION SUMMARY

**Antigen:** Acetylated lysine-KLH conjugate.

**Host Species:** Rabbit

**Antibody Class:** Polyclonal

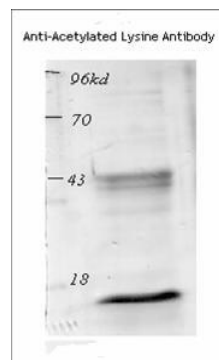
**Preservatives:** None.

### SPECIFICITY

This antibody recognizes proteins containing acetylated lysine residues. It does not recognize non-acetylated proteins.

### APPLICATIONS

**Immunoblotting:** use at 1-2ug/ml



Western blot analysis of acetylated histone from TSA-treated mouse spleen cells.

**ELISA:** use at 1-10ug/ml with acetylated lysine-containing proteins on the solid phase.

**Immunoprecipitation**

These are recommended concentrations. Enduser should determine optimal concentrations for their applications.

### DILUTION INSTRUCTIONS

Dilute in PBS or medium which is identical to that used in the assay system.

### STORAGE AND STABILITY

This product is stable for at least 1 year at -20°C. Freeze in multiple aliquots to avoid repeated freeze-thaw cycles.

*For in vitro investigational use only. Not for use in therapeutic or diagnostic procedures.*