

Ubiquitin Polyclonal Antibody

ORDERING INFORMATION

Catalog nos.: 56354-50 (50ug) 56354-200 (200ug)

Format: Protein A-purified antibody in PBS, pH 7.2, 50% glycerol, 0.09% sodium azide.

BACKGROUND

Ubiquitin is a highly-conserved, 76-amino acid polypeptide expressed in all eukaryotic cells. Ubiquitination of proteins facilitates targeting of cytosolic and nuclear proteins for degradation by proteasomes. This essential cellular process involves a multi-enzyme cascade of ubiquitin-activating enzymes (E1s), ubiquitin-conjugating enzymes (E2s or Ubc's), and ubiquitin-protein ligases (E3s). Ubiquitination is also involved in internalization and degradation of plasma membrane proteins such as T cell receptor subunits while still associated with membranes of the endoplasmic reticulum.

SPECIFICATION SUMMARY

Antigen: Native bovine ubiquitin conjugated to KLH.

Accession no.: NP_776558

Gene ID: 281370

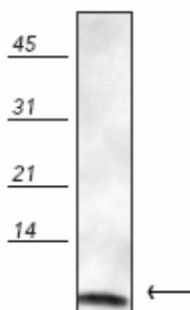
Host Species: Rabbit

Antibody Class: Polyclonal

Specificity: This antibody recognizes free ubiquitin as well as ubiquitinated proteins in immunoblots. It recognizes human, monkey, mouse, rat, hamster, rabbit, Guinea pig, bovine, porcine, canine, sheep, chicken, *Xenopus*, yeast, *Drosophila*, and fish ubiquitin.

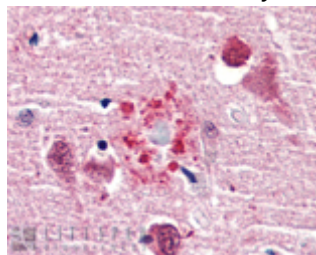
APPLICATIONS

Immunoblotting: Use at 1-5ug/ml. A band of ~10kDa is detected.



Detection of ubiquitin in mouse brain lysate.

Immunohistochemistry: use at 1-10ug/ml.



Detection of ubiquitin in human brain cortex, senile plaque.

These are recommended concentrations. Endusers should determine optimal concentrations for their applications.

DILUTION INSTRUCTIONS

Dilute in PBS or medium that is identical to that used in the assay system.

STORAGE AND STABILITY

This antibody is stable for at least one (1) year at -20°C. Store in appropriate aliquots to avoid repeated freeze-thaw cycles.

For in vitro investigational use only. Not intended for therapeutic or diagnostic procedures.