

Elk1 (Phospho-Ser389) Polyclonal Antibody

ORDERING INFORMATION

Catalog No.: 43037

Format: 100ul at 1.0mg/ml in PBS (without Mg²⁺ and Ca²⁺), pH 7.4, 150mM NaCl, 0.02% sodium azide and 50% glycerol. Affinity-purified on phosphopeptide; non-phosphopeptide-reactive antibodies were removed by chromatography on non-phosphorylated peptide.

BACKGROUND

Elk-1 is a member of the Ets family of transcription factors and of the ternary complex factor (TCF) subfamily. Proteins of the TCF subfamily form a ternary complex by binding to the serum response factor and the serum response element in the promoter of the *c-fos* proto-oncogene. The protein encoded by this gene is a nuclear target for the ras-raf-MAPK signaling cascade. Alternatively spliced transcript variants encoding the same protein have been found for this gene.

SPECIFICATION SUMMARY

Antigen: Peptide sequence that includes phosphorylation site of serine 389 (P-R-S(p)-P-A) derived from human Elk1 and conjugated to KLH.

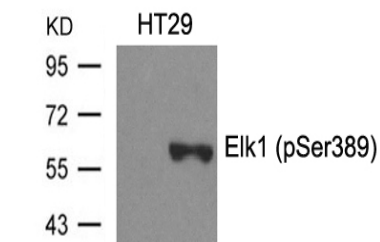
Accession no.: P19419, NP_001107595.1

Host Species: Rabbit

Specificity: This antibody detects endogenous human, mouse, and rat Elk1 only when phosphorylated at serine 389.

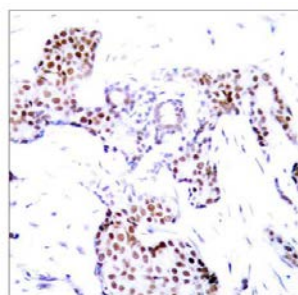
APPLICATION

Immunoblotting: use at dilution of 1:500-1:1,000. **Immunohistochemistry:** use at dilution of 1:50-1:100.



Anisomycin - +

Detection of Elk1 (phospho-Ser389) in extracts of HT29 cells untreated or treated with Anisomycin.



Detection of Elk1 (phospho-Ser389) in paraffin-embedded human breast carcinoma tissue.

These are recommended working dilutions. Enduser should determine optimal dilutions for their applications.

DILUTION INSTRUCTIONS

Dilute in PBS or medium that is identical to that used in the assay system.

STORAGE AND STABILITY

This antibody is stable for at least one (1) year at -20°C. Can be stored at 4°C for short-term use. *For in vitro investigational use only. Not intended for therapeutic or diagnostic applications.*