

JunD (Phospho-Ser255) Polyclonal Antibody

ORDERING INFORMATION

Catalog No.: 43028

Format: 100ul at 1.0mg/ml in PBS (without Mg²⁺ and Ca²⁺), pH 7.4, 150mM NaCl, 0.02% sodium azide and 50% glycerol. Affinity-purified on phosphopeptide; non-phosphopeptide-reactive antibodies were removed by chromatography on non-phosphorylated peptide.

BACKGROUND

JunD protein encoded by this intronless gene is a member of the JUN family and a functional component of the AP1 transcription factor complex. This protein has been proposed to protect cells from p53-dependent senescence and apoptosis. Alternative translation initiation site usage results in the production of different isoforms.

SPECIFICATION SUMMARY

Antigen: Peptide sequence that includes phosphorylation site of serine 255 (G-E-S(p)-P-P) derived from human JunD and conjugated to KLH.

Accession no.: P17535, NP_005345.3

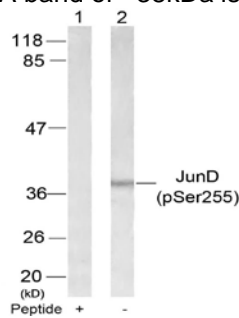
Host Species: Rabbit

Specificity: This antibody detects endogenous human, mouse, and rat JunD only when phosphorylated at serine 255.

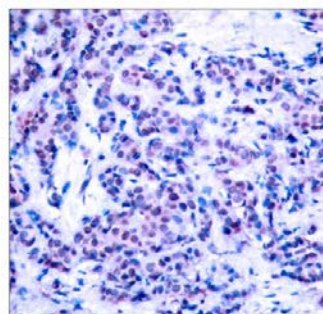
APPLICATION

Immunoblotting: use at dilution of 1:500-1:1,000. **Immunohistochemistry:** use at dilution of 1:50-1:100.

A band of ~38kDa is detected.



Detection of JunD (phospho-Ser255) in extracts of 293 cells with antibody pre-incubated with blocking peptide (+) or without blocking peptide (-).



Detection of JunD (phospho-Ser255) in paraffin-embedded human breast carcinoma tissue.

These are recommended working dilutions. Enduser should determine optimal dilutions for their applications.

DILUTION INSTRUCTIONS

Dilute in PBS or medium that is identical to that used in the assay system.

STORAGE AND STABILITY

This antibody is stable for at least one (1) year at -20°C. Can be stored at 4°C for short-term use.

For in vitro investigational use only. Not intended for therapeutic or diagnostic applications.