

Cytokeratin 18 Monoclonal Antibody

ORDERING INFORMATION

Catalog No.	Clone No.	Size
34058	G018.1	100ul

Format: Purified antibody in Tris buffer, pH 7.3-7.7, 1% BSA, <0.1% sodium azide.

BACKGROUND

Cytokeratin 18 is a type I cytokeratin. Together with its filament partner cytokeratin 8, it is perhaps the most commonly found products of the intermediate filament gene family. They are expressed in single layer epithelial tissues. Mutations in this gene have been linked to cryptogenic cirrhosis. Multimers of cytokeratin 18 and cytokeratin 8 are present in simple, glandular, and transitional epithelial cells, but absent from stratified epithelial cells, and are found in adenocarcinomas of simple and glandular epithelium origin and poorly differentiated squamous carcinoma cells.

DESCRIPTION

Antigen: Recombinant human Cytokeratin 18.

Accession No.: P05783

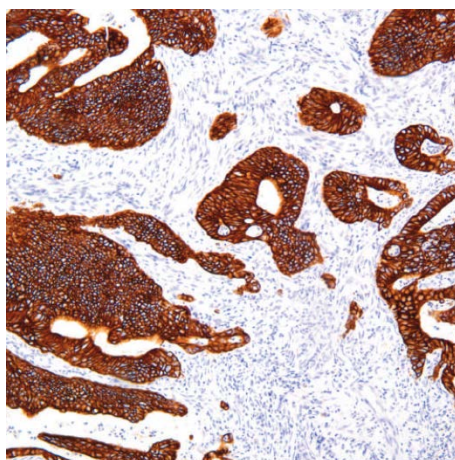
Host: Mouse

Antibody Subtype: IgG1

Specificity: Human Cytokeratin 18. Reactivity with other species has not been investigated.

APPLICATIONS

Immunohistochemistry: use at a dilution of 1:100-1:200 on formalin-fixed, paraffin-embedded samples after heat-induced epitope retrieval at pH 9 for 10-30 minutes.



Detection of Cytokeratin 18 in human breast carcinoma with #34058 diluted 1:100-1:200.

STORAGE AND STABILITY

Store at 2-8°C. Do not freeze.

For in vitro investigational use only. Not for use in diagnostic or therapeutic applications.