

## BSEP (Bile Salt Export Pump) Monoclonal Antibody

### ORDERING INFORMATION

Catalog No.	Clone No.	Size
34052	G518.1	100ul

**Format:** Purified antibody in Tris buffer, pH 7.3-7.7, 1% BSA, <0.1% sodium azide.

### BACKGROUND

Bile Salt Export Pump (BSEP) is a member of the ATP-binding cassette transporters which mediate the transport of bile acid, taurocholate, and other cholates across the hepatocyte canalicular membrane into the canaliculus. BSEP is associated with progressive familial intrahepatic cholestasis type 2 (PFIC2) and benign recurrent intrahepatic cholestasis type 2 (BRIC2). PFIC2 caused by mutations in the *BSEP* gene appears to increase the risk of hepatocellular carcinoma in early life.

### DESCRIPTION

**Antigen:** Recombinant human BSEP.

**Accession No.:** O95342

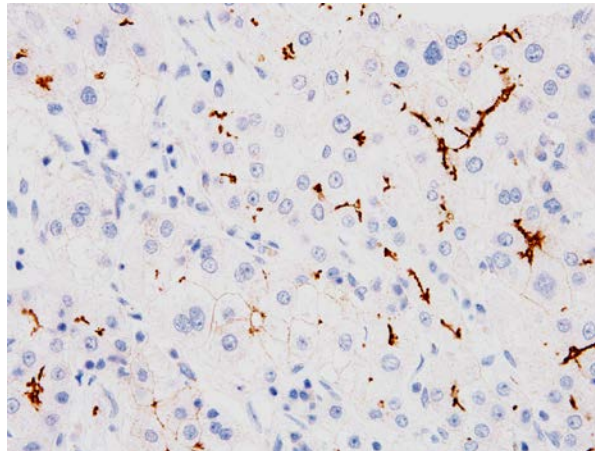
**Host:** Mouse

**Antibody Subtype:** IgG1

**Specificity:** Human BSEP. Reactivity with other species has not been investigated.

### APPLICATIONS

**Immunohistochemistry:** use at a dilution of 1:100-1:200 on formalin-fixed, paraffin-embedded samples after heat-induced epitope retrieval at pH 9 for 10-30 minutes.



Detection of BSEP in human liver with #34052 diluted 1:100-1:200.

### STORAGE AND STABILITY

Store at 2-8°C. Do not freeze.

*For in vitro investigational use only. Not for use in diagnostic or therapeutic applications.*