

Anti-ENL Monoclonal Antibody

ORDERING INFORMATION

Catalog no.: 34043

Size: 100ug Protein G-purified antibody in PBS, pH 7.4.

BACKGROUND

The AF4 and ENL (Eleven nineteen Leukemia) protein families are the most frequent MLL fusion partners accounting for two-thirds of *MLL*-associated leukemia incidence. The ENL family includes ENL and AF9 and has structural homology to the yeast Anc1 protein. ENL is a nuclear protein that is capable of activating transcription from synthetic reporter genes in both lymphoid and myeloid cells as well as in yeast. Deletion muta-genesis demonstrated that the minimal portion of ENL required for activation of transcription was localized to its C-terminal 90 amino acids. This region is highly conserved between ENL and AF9 and is retained in all Hrx-ENL and Hrx-AF9 fusion proteins. Thus, the leukemogenic contribution and transcriptional activation potential of ENL colocalize to its highly conserved carboxy terminus.

SPECIFICATION SUMMARY

Antigen: Maltose-binding fusion protein containing ENL amino acids 414-472 (Accession no. NP_005925).

Clone no.: 3.1.1

Host: Mouse

Antibody Class: IgG1

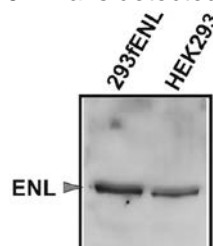
Preservatives: None - available on request.

SPECIFICITY

This antibody recognizes human ENL.

APPLICATIONS

Immunoblotting: use at 1-5ug/ml. A band of ~62kDa is detected.



Extracts from transduced 293fENL and HEK293 parental cells blotted with #34043.

DILUTION INSTRUCTIONS

Dilute in PBS or medium that is identical to that used in the assay system.

STORAGE AND STABILITY

This antibody is stable for at least one (1) year at -20°C. Avoid multiple freeze-thaw cycles.

PRODUCT REFERENCES

Rubnitz JE et al. 1994 *Blood* 84: 1747-1752.

Yokoyama A et al. 2010 *Cancer Cell* 17: 198-212.

Mueller D et al. 2007 *Blood* 110: 4445-4454.

For in vitro investigational use only. Not intended for diagnostic or therapeutic applications.