

Anti-AF4 Monoclonal Antibody

ORDERING INFORMATION

Catalog no.: 34042

Size: 100ug Protein G-purified antibody in PBS, pH 7.4.

BACKGROUND

The AF4 and ENL (Eleven nineteen Leukemia) protein families are the most frequent MLL fusion partners accounting for two-thirds of *MLL*-associated leukemia incidence. AF4 (also known as FEL) is a gene which was first described as a fusion partner with MLL in the t(4;11) acute leukemia. Based on analysis by Northern blotting, AF4 mRNAs were found to be widely expressed in hematopoietic cells and normal human tissues. cDNA sequence analysis of the AF4 gene showed that it encodes a serine/proline-rich protein with a predicted size of 130-140kDa containing guanosine triphosphate (GTP)-binding and putative nuclear-localization sequences. Studies have demonstrated that a related gene, LAF4, isolated from Burkitt's lymphoma, shares high degree of sequence homology with AF4. LAF4 was shown to possess DNA binding ability and transcriptional activation potential. Both AF4 and LAF4 were shown to be evolutionary conserved in vertebrates suggesting an important functional role of the genes.

SPECIFICATION SUMMARY

Antigen: Maltose-binding fusion protein containing AF4 amino acids 782-979 (Accession no. NP_005926).

Clone no.: C2.1.1

Host: Mouse

Antibody Class: IgG1

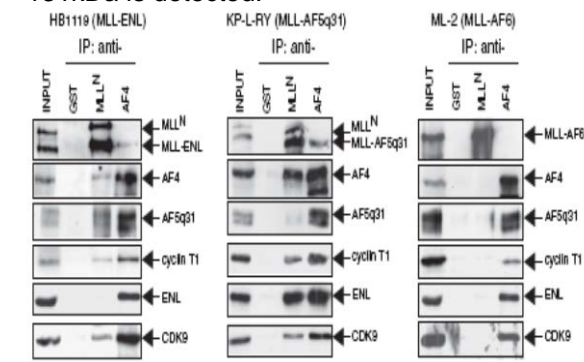
Preservatives: None - available on request.

SPECIFICITY

This antibody recognizes human AF4.

APPLICATIONS

Immunoblotting: use at 1-5ug/ml. A band of ~131kDa is detected.



IP western blot analysis was performed on human leukemia cell lines that harbor MLL chromosomal translocations and express MLL chimeric oncoproteins (indicated at tops). IP was performed with the antibodies indicated on the top of the gels, and the precipitates were immunoblotted with the antibodies indicated on the right. Antibody #34042 is shown as AF4. Anti-GST antibodies served as negative controls. **Positive control:** K562 cell lysates.

These are recommended concentrations. Endusers should determine optimal concentrations for their applications.

DILUTION INSTRUCTIONS

Dilute in PBS or medium that is identical to that used in the assay system.

STORAGE AND STABILITY

This antibody is stable for at least one (1) year at -20°C. Avoid multiple freeze-thaw cycles.

PRODUCT REFERENCE

Yokoyama A et al. 2010 Cancer Cell 17: 198-212.

For in vitro investigational use only. Not intended for diagnostic or therapeutic applications.