

DOG1 Monoclonal Antibody

ORDERING INFORMATION

Catalog No.: 34036

Size: 100 ug Protein G-purified antibody in PBS, pH 7.4.

SPECIFICATION SUMMARY

Antigen: Synthetic peptide corresponding to aa 904-986 of human DOG1 (accession no. Q5XXA6).

Clone no.: DOG1.1

Host Species: Mouse

Antibody Class: IgG1

Preservatives: None. Available on request.

BACKGROUND

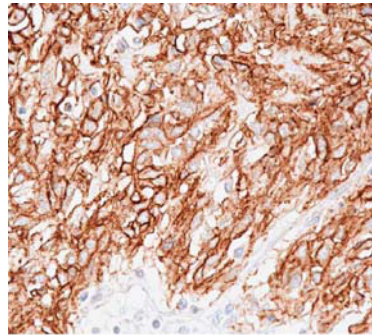
DOG1 (Discovered on GIST1), also known as TMEM16A and ANO1, has emerged in recent years as a promising biomarker for gastrointestinal stromal tumors (GIST). It was originally discovered through microarray expression profiling analysis as a gene that is highly expressed in GIST, and subsequent immunohistochemical studies have shown its use in its diagnosis. DOG1 antibodies are more sensitive than KIT antibodies in detecting tumors of gastric origin, tumors with epithelioid morphology, and tumors harboring PDGFRA mutation. DOG1 immunoreactivity is rarely observed in other mesenchymal and nonmesenchymal tumor types. These results support the use of DOG1 as a biomarker for GIST.

SPECIFICITY

This antibody recognizes human DOG1.

APPLICATIONS

Immunohistochemistry: Use at 1-10ug/ml on paraffin-embedded samples. Antigen retrieval solution: 10mM citrate, pH 6 (boil slides by microwaving in antigen retrieval solution for 12 minutes).



Membranous staining of DOG1 in GIST

User should determine optimal concentrations for their applications.

DILUTION INSTRUCTIONS

Dilute in PBS or medium which is identical to that used in the assay system.

STORAGE AND STABILITY

This antibody is stable for at least one (1) year at -20°C. Avoid multiple freeze-thaw cycles.

PRODUCT REFERENCES

Espinosa I et al. 2008 Am J Surg Pathol 32: 210-218.

Lee CH et al. 2010 Adv Anat Pathol 17: 222-232.

For in vitro investigational use only. Not for use in diagnostic or therapeutic procedures.