

Tumor Endothelial Marker 5 (TEM5) Polyclonal Antibody

ORDERING INFORMATION

Catalog No.: 34028

Size: 50ug immunogen affinity purified antibody in PBS containing 0.1% sodium azide.

BACKGROUND

Tumor endothelial marker 5 (TEM5) is a member of the adhesion family of GPCRs and is upregulated in endothelial cells during tumor and physiologic angiogenesis. Soluble TEM5 (sTEM5) is shed by endothelial cells during angiogenesis and binds to glycosaminoglycans on extracellular matrix and cell surface proteoglycans. After proteolytic processing, an RGD-binding site for integrin $\alpha_v\beta_3$ is exposed on sTEM5. Adhesion of endothelial cells to immobilized proteolytically processed sTEM5 promotes their survival.

SPECIFICATION SUMMARY

Antigen: Synthetic peptide conjugated to KLH

Host Species: Rabbit

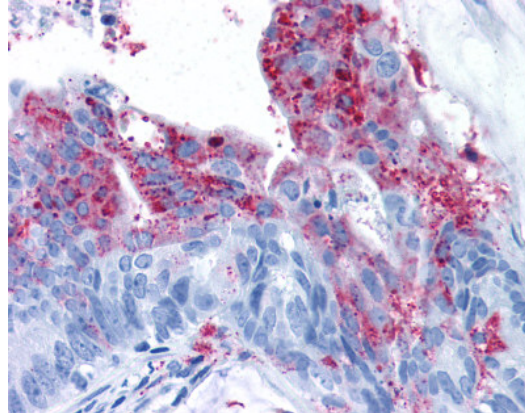
Preservatives: 0.1% sodium azide

SPECIFICITY

This antibody recognizes an epitope within the extracellular domain of human TEM5.

APPLICATIONS

Immunohistochemistry: Use at 10 ug/ml.



Colon carcinoma: Formalin-fixed, paraffin-embedded

DILUTION INSTRUCTIONS

Dilute in PBS or medium which is identical to that used in the assay system.

STORAGE AND STABILITY

This antibody is stable at 4°C (short-term) and -70°C (long-term).

For in vitro investigational use only. Not for use in therapeutic or diagnostic procedures.