

Telomerase-Associated Protein-1 Polyclonal Antibody

ORDERING INFORMATION

Catalog No.: 34026

Size: 50ug immunogen affinity purified antibody in PBS containing 0.02% sodium azide.

BACKGROUND

Telomerase is a reverse transcriptase that adds telomeric repeats (TTAGGG) to chromosome ends. In normal somatic cells, telomerase is not active and telomeres progressively shorten, leading to limited cell lifespan and senescence. Activation of telomerase is associated with human cancers and cell immortalization. Human telomerase is comprised of three major subunits: a catalytic subunit (hTERT), a template RNA (hTR), and telomerase-associated protein (TEP-1). Transcription of TERT is the primary mechanism for regulating telomerase activity.

SPECIFICATION SUMMARY

Antigen: Synthetic peptide conjugated to KLH

Host Species: Rabbit

Preservatives: 0.02% sodium azide

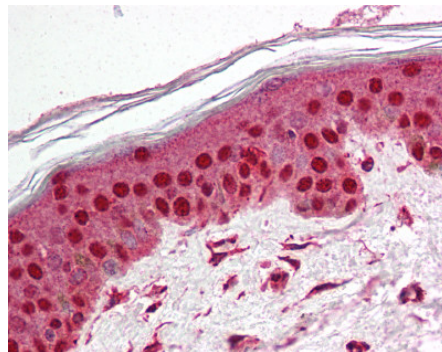
SPECIFICITY

This antibody recognizes an epitope within 20 amino acids near the amino terminus of human TEP-1.

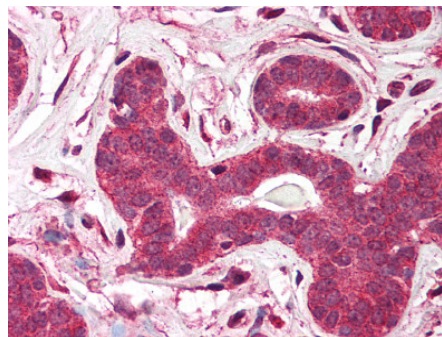
APPLICATIONS

Immunoblotting: Use at 5ug/ml.

Immunohistochemistry: Use at 5ug/ml.



Skin: Formalin-fixed, paraffin-embedded



Breast: Formalin-fixed, paraffin-embedded

DILUTION INSTRUCTIONS

Dilute in PBS or medium which is identical to that used in the assay system.

STORAGE AND STABILITY

This antibody is stable at 4°C (short-term) and -70°C (long-term).

For in vitro investigational use only. Not for use in therapeutic or diagnostic procedures.