

## Ribonucleotide Reductase M2B (p53 Inducible) Polyclonal Antibody

### ORDERING INFORMATION

**Catalog No.:** 34023

**Size:** 50ug peptide immunogen affinity purified antibody in PBS containing 0.02% sodium azide.

### BACKGROUND

p53R2 is a p53 inducible gene that contains a p53 binding sequence and encodes a subunit of the enzyme ribonucleotide reductase. p53R2 is induced by chemicals and irradiation that cause DNA damage. The product of the p53R2 gene is directly involved in the p53 checkpoint for repair of damaged DNA. The isoform of the p53 family member p73 also induces p53R2 expression. P53R2 is an important target of p53 for tumor suppression.

### SPECIFICATION SUMMARY

**Antigen:** Synthetic peptide conjugated to KLH.

**Host Species:** Rabbit

**Preservatives:** 0.02% sodium azide

### SPECIFICITY

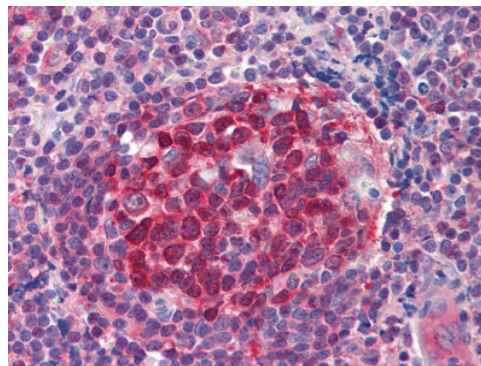
This antibody recognizes an epitope within aa 2-17 of human p53R2.

*For in vitro investigational use only. Not for use in therapeutic or diagnostic procedures.*

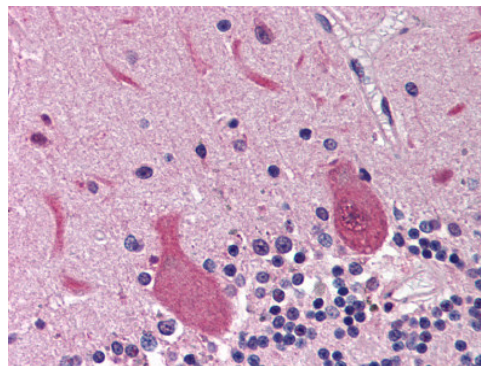
### APPLICATIONS

*Immunoblotting:* Use at 0.5-1ug/ml.

*Immunohistochemistry:* Use at 2.5ug/ml.



Tonsil: Formalin-fixed, paraffin-embedded



Brain, cerebellum: Formalin-fixed, paraffin-embedded

### DILUTION INSTRUCTIONS

Dilute in PBS or medium which is identical to that used in the assay system.

### STORAGE AND STABILITY

This antibody is stable at 4°C (short-term) and -70°C (long-term).