

## BCAS1 / NABC1 Polyclonal Antibody

### ORDERING INFORMATION

**Catalog No.:** 34017

**Size:** 100 ug antigen affinity-purified antibody in PBS, pH 7.4.

### BACKGROUND

Breast Carcinoma Amplified Sequence 1 (BCAS1), also known as Novel Amplified in Breast Cancer 1 (NABC1) was isolated from a region at 20q13 and is amplified in several tumor types. It is associated with more aggressive tumor phenotypes. BCAS1/NABC1 is highly expressed in some, but not all, breast cancer cell lines and in some breast tumors at 20q13.2. The BCAS1/NABC1 gene is predicted to encode a protein of 584 amino acids with no significant homology to other proteins.

### SPECIFICATION SUMMARY

**Immunogen:** Synthetic peptide corresponding to amino acids 532-550 of human BCAS1/NABC1.

**Host Species:** Rabbit

**Antibody Class:** Polyclonal

**Preservatives:** None. Available on request.

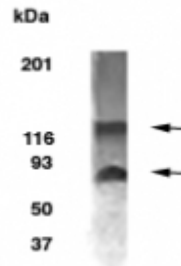
### SPECIFICITY

This antibody recognizes human BCAS1/NABC1.

### APPLICATIONS

*Immunoblotting* : use at 1-5ug/ml.

A band of approximately 60 kDa is detected, however, protein dimerization may occur. These are recommended concentrations. User should determine optimal concentrations for their applications.



Western blot detection of NABC1 from 15 ug of MCF-7 cell lysate using anti-NABC1 at 1:1,000 dilution. NABC1 is a 60 kDa protein; however it forms homodimers, which are detected in MCF-7 cells.

### DILUTION INSTRUCTIONS

Dilute in PBS or medium which is identical to that used in the assay system.

### STORAGE AND STABILITY

This antibody is stable for at least one (1) year at -20°C. Avoid multiple freeze-thaw cycles.

*For in vitro investigational use only. Not for use in therapeutic or diagnostic procedures.*