

## Secretogranin II Polyclonal Antibody

### ORDERING INFORMATION

**Catalog No.:** 26107

**Format:** 100ug peptide affinity-purified rabbit IgG (2mg/ml)

### BACKGROUND

Secretogranin II (SgII), encoded by the gene SCG2, is a member of the granin family of neuroendocrine secretory proteins. The granin family also includes chromogranin A (CgA), chromogranin B (CgB), and several other secretogranin-like proteins. Studies in rodents suggest that the full-length protein, SgII, is involved in the packaging or sorting of peptide hormones and neuropeptides into secretory vesicles. SgII occurs in a variety of neoplasms arising from endocrine and neuroendocrine cells and can be a useful histological tumor marker for those cells.

### SPECIFICATION SUMMARY

**Antigen:** Synthetic peptide derived from the N-terminus of mature SgII protein:

**QRNQLLGKEPDLRLLENVQK** (Accession no. AAA36607).

**Host Species:** Rabbit

**Specificity:** This antibody recognizes human, rat, and squirrel monkey SgII.

### APPLICATIONS

**Immunoblotting:** use at 0.5-1.0ug/ml.

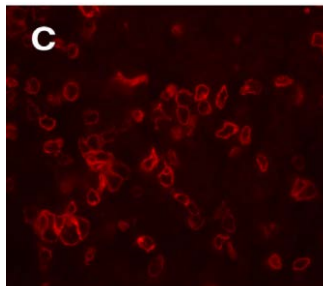


86,000

PC12 extract (1ug)

Although the predicted mw of SgII is ~71kDa, the highly acidic nature of SgII causes it to run at a higher mw in SDS-PAGE.

**Immunohistochemistry:** use at 2-5ug/ml.



Squirrel monkey pituitary gland, staining visualized with Texas Red-labeled goat anti-rabbit antibody.

### DILUTION INSTRUCTIONS

Dilute in PBS or medium that is identical to that used in the assay system.

### STORAGE AND STABILITY

This antibody is stable for at least one (1) year at -20°C to -70°C. Avoid repeated freeze-thaw cycles.

### PRODUCT REFERENCE

Vasauskas AA et al. 2011. Regulation and distribution of squirrel monkey chorionic gonadotropin and secretogranin II in the pituitary. *General and Comparative Endocrinology* 170: 509-513.

*For in vitro investigational use only. Not intended for diagnostic or therapeutic applications.*