

## Anti-RICK (NT) Antibody

### ORDERING INFORMATION

**Catalog No.:** 2427

**Size:** 100ug IgG in PBS, pH 7.4, purified by immunoaffinity chromatography.

### BACKGROUND

A CARD-containing serine/threonine kinase that regulates apoptosis has been identified and designated RICK (RIP-like interacting CLARP kinase). RICK contains an N-terminal kinase catalytic domain and a C-terminal CARD domain. RICK kinase domain has high sequence homology to that of RIP. Overexpression of RICK promotes the activation of caspase-8 and Fas-induced apoptosis. RICK represents a novel kinase that regulates Fas induced-apoptosis. The messenger RNA of RICK is expressed in a variety of human tissues.

### SPECIFICATION SUMMARY

**Antigen:** Synthetic peptide corresponding to aa 11-30 at the N-terminus of human RICK (accession no. O43353).

**Host Species:** Rabbit

**Stabilizers:** None

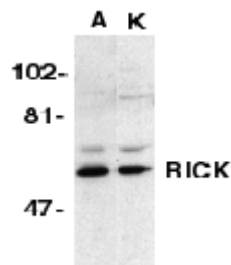
**Preservatives:** 0.02% sodium azide.

### SPECIFICITY

This antibody recognizes full-length human, mouse, and rat RICK (60kDa).

### APPLICATIONS

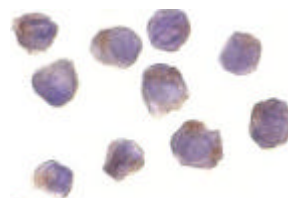
*Immunoblotting:* use at 1ug/ml.



Western blot analysis of RICK in A431 (A) and K562 (K) whole cell lysate with RICK antibody at 1µg/ml.

*Positive control:* A431 or K562 cell lysate.

*Immunocytochemistry:* use at 10ug/ml.



Immunocytochemical staining of RICK in A431 cells with RICK antibody at 10µg/ml.

These are recommended concentrations. Enduser should determine optimal concentrations for their applications.

### DILUTION INSTRUCTIONS

Dilute in PBS or medium which is identical to that used in the assay system.

### STORAGE AND STABILITY

This antibody is stable for at least one (1) year at -20°C. Avoid multiple freeze-thaw cycles.

*For in vitro investigational use only. Not for use in therapeutic or diagnostic procedures.*