

## Anti-Caspase-9 (I20) Antibody

### ORDERING INFORMATION

**Catalog No.:** 2418

**Size:** 100ug IgG in PBS, pH 7.4, purified by immunoaffinity chromatography.

### BACKGROUND

Cell death signals are transduced by death domain-containing adapter molecules and members of the caspase family of proteases.

Caspase-9 and Apaf-1 bind to each other, which leads to caspase-9 activation.

Caspase-9 is also activated by granzyme B and CPP32. Activated caspase-9 cleaves and activates caspase-3, a protease responsible for proteolytic cleavage of many key proteins involved in apoptosis.

Caspase-9 plays a central role in cell death induced by a wide variety of apoptosis inducers including TNF $\alpha$ , TRAIL, anti-CD95, FADD, and TRADD. Caspase-9 is expressed in a variety of human tissues.

### SPECIFICATION SUMMARY

**Antigen:** Peptide corresponding to aa 299-318 of human caspase-9 (accession no. P55211).

**Host Species:** Rabbit

**Stabilizers:** None

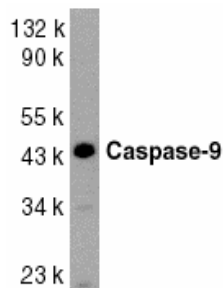
**Preservatives:** 0.02% sodium azide.

### SPECIFICITY

This antibody recognizes full-length human caspase-9 (46kDa).

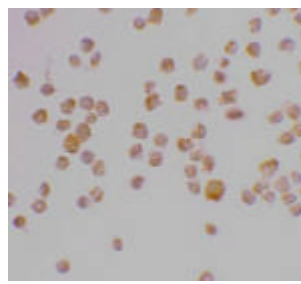
### APPLICATIONS

*Immunoblotting:* use at 1ug/ml.



Western blot analysis of Caspase-9 in HeLa whole cell lysate with Caspase-9 antibody at 1ug/ml.

*Immunocytochemistry:* use at 2ug/ml.



Immunocytochemical staining of K562 cells using Caspase-9 antibody at 2 $\mu$ g/ml.

These are recommended concentrations.

Enduser should determine optimal concentrations for their applications.

*Positive control:* Whole cell lysate from HeLa cells.

### DILUTION INSTRUCTIONS

Dilute in PBS or medium which is identical to that used in the assay system.

### STORAGE AND STABILITY

This antibody is stable for at least one (1) year at -20°C. Avoid multiple freeze-thaw cycles.

*For in vitro investigational use only. Not for use in therapeutic or diagnostic procedures.*