

Anti-CAD (CT) Antibody

ORDERING INFORMATION

Catalog No.: 2416

Size: 100ug IgG in PBS, pH 7.4, purified by immunoaffinity chromatography.

BACKGROUND

Cell death signals are transduced by death domain-containing adapter molecules and members of the caspase family of proteases. These death signals finally cause the degradation of chromosomal DNA by activated DNase. A mouse DNase that causes DNA fragmentation was identified recently and designated CAD (caspase activated deoxyribonuclease). Activation of CAD/DFF40, which causes DNA degradation, is the hallmark of apoptotic cell death.

SPECIFICATION SUMMARY

Antigen: Peptide corresponding to aa 205-222 of mouse CAD (accession no. O54788).

Host Species: Rabbit

Stabilizers: None

Preservatives: 0.02% sodium azide.

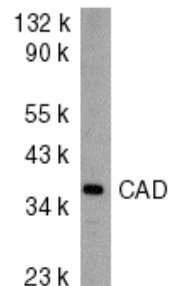
SPECIFICITY

This antibody recognizes full-length mouse CAD (40kDa).

For in vitro investigational use only. Not for use in therapeutic or diagnostic procedures.

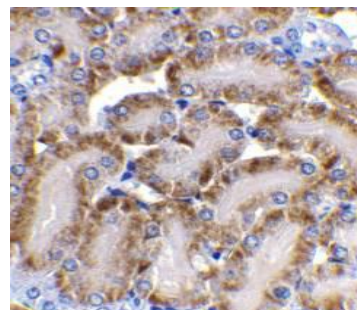
APPLICATIONS

Immunoblotting: use at 2ug/ml.



Western blot analysis of CAD in mouse kidney tissue lysate with CAD antibody at 2µg/ml.

Immunohistochemistry: use at 2ug/ml.



Immunohistochemical staining of CAD in mouse kidney tissue with CAD antibody at 2µg/ml.

These are recommended concentrations.

Enduser should determine optimal concentrations for their applications.

Positive control: Mouse lung tissue lysate.

DILUTION INSTRUCTIONS

Dilute in PBS or medium which is identical to that used in the assay system.

STORAGE AND STABILITY

This antibody is stable for at least one (1) year at -20°C. Avoid multiple freeze-thaw cycles.