

## Anti-DFF (CT) Antibody

### ORDERING INFORMATION

**Catalog No.:** 2409

**Size:** 100ug IgG in PBS, pH 7.4, purified by immunoaffinity chromatography.

### BACKGROUND

A human DNA fragmentation factor (DFF) which is cleaved by caspase-3 during apoptosis was identified recently. The mouse homologue of human DFF was identified as a DNase inhibitor and was designated ICAD. Upon cleavage of DFF/ICAD, a caspase activated deoxyribonuclease (CAD) is released and activated and eventually causes the degradation of DNA in nuclei. Cleavage of CAD inhibitor molecule DFF/ICAD, which causes DNase activation and DNA degradation, is a hallmark of apoptotic cell death.

### SPECIFICATION SUMMARY

**Antigen:** Peptide corresponding to aa 313-331 at the C-terminus of human DFF45 (accession no. NP\_004392).

**Host Speciec:** Rabbit

**Stabilizers:** None

**Preservatives:** 0.02% sodium azide.

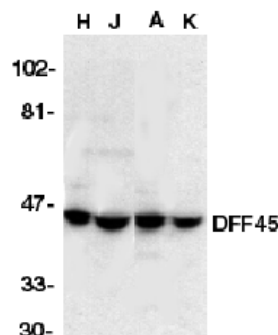
### SPECIFICITY

This antibody recognizes non-cleaved (45kDa) and cleaved DFF45.

*For in vitro investigational use only. Not for use in therapeutic or diagnostic procedures.*

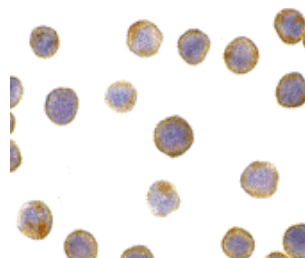
### APPLICATIONS

*Immunoblotting :* use at 1ug/ml.



Western blot analysis of DFF45 in HeLa (H), Jurkat (J), A431 (A), and K562 (K) whole cell lysate with anti-DFF45 (CT) at 1ug/ml.

*Immunocytochemistry:* use at 5ug/ml.



Immunocytochemical staining of DFF45 in HeLa cells with DFF45 antibody at 5µg/ml.

These are recommended concentrations.

Enduser should determine optimal concentrations for their applications.

*Positive control:* Whole cell lysate from HeLa cells.

### DILUTION INSTRUCTIONS

Dilute in PBS or medium which is identical to that used in the assay system.

### STORAGE AND STABILITY

This antibody is stable for at least one (1) year at -20°C. Avoid multiple freeze-thaw cycles.