

Anti-Bnip3L (IN) Antibody

ORDERING INFORMATION

Catalog No.: 2289

Size: 100ug IgG in PBS, pH 7.4, purified by immunoaffinity chromatography.

BACKGROUND

A novel BH3 domain-containing protein was recently identified and designated Bnip3L, Bnip3 α , or Nix. Bnip3L is a homolog of the E1B 19K/Bcl-2 binding and pro-apoptotic protein Bnip3. Overexpression of Bnip3L induces apoptosis. Bnip3L interacts with and overcomes suppression by Bcl-2 and Bcl-xL. Bnip3L is localized in mitochondria. The messenger RNA of Bnip3L is ubiquitously expressed in human tissues. Bnip3L and Bnip3 form a new subfamily of the pro-apoptotic-mitochondrial proteins.

SPECIFICATION SUMMARY

Antigen: Peptide corresponding to aa 77-92 of human Bnip3L (accession no. AF067396) This amino acid sequence is identical to that of mouse.

Host Species: Rabbit

Stabilizers: None

Preservatives: 0.02% sodium azide.

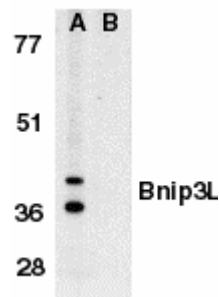
SPECIFICITY

This antibody recognizes monomeric human and mouse Bnip3L. A band of 40kDa is detected in immunoblots.

For in vitro investigational use only. Not for use in therapeutic or diagnostic procedures.

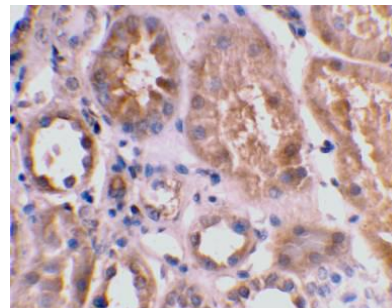
APPLICATIONS

Immunoblotting: use at 1ug/ml.



Western blot analysis of Bnip3L in K562 whole cell lysate in the absence (A), or presence (B) of immunogenic peptide with Bnip3L antibody at 1 μ g/ml.

Immunohistochemistry: use at 2ug/ml.



Immunohistochemical staining of human kidney tissue using Bnip3L antibody at 2 μ g/ml.

These are recommended concentrations. Enduser should determine optimal concentrations for their applications.

Positive control: Whole cell lysate of human K562 cells.

DILUTION INSTRUCTIONS

Dilute in PBS or medium which is identical to that used in the assay system.

STORAGE AND STABILITY

This antibody is stable for at least one (1) year at -20°C. Avoid multiple freeze-thaw cycles.