

Anti-ASC Antibody

ORDERING INFORMATION

Catalog No.: 2287

Size: 100ug IgG in PBS, pH 7.4, purified by immunoaffinity chromatography.

BACKGROUND

A novel CARD-containing protein was recently identified and designated ASC (or TMS1). ASC induces apoptosis by activating caspase-9 and inhibits survival of human breast cancer cells. ASC is widely expressed in human and mouse tissues.

SPECIFICATION SUMMARY

Antigen: Peptide corresponding to aa 182-195 of human ASC.

Host Species: Rabbit

Stabilizers: None

Preservatives: 0.02% sodium azide.

SPECIFICITY

This antibody recognizes human ASC (25kDa).

DILUTION INSTRUCTIONS

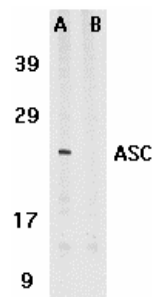
Dilute in PBS or medium which is identical to that used in the assay system.

STORAGE AND STABILITY

This antibody is stable for at least one (1) year at -20°C. Avoid multiple freeze-thaw cycles.

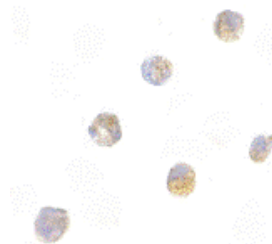
APPLICATIONS

Immunoblotting: use at 1ug/ml.



Western blot analysis of ASC in HL60 whole cell lysate in the absence (A) or presence (B) of blocking peptide with ASC antibody at 1µg/ml.

Immunocytochemistry: use at 5ug/ml.



Immunocytochemistry of ASC in HL60 cells with ASC antibody at 5µg/ml.

These are recommended concentrations.

Enduser should determine optimal concentrations for their applications.

Positive control: Whole cell lysate of HL60 cells.

For in vitro investigational use only. Not for use in therapeutic or diagnostic procedures.