

Anti-Caspase-13 Antibody

ORDERING INFORMATION

Catalog No.: 2245

Size: 100ug IgG in PBS, pH 7.4, purified by immunoaffinity chromatography.

BACKGROUND

Apoptosis is related to many diseases and induced by a family of cell death receptors and their ligands. Cell death signals are transduced by death domain-containing adapter molecules and members of the caspase family of proteases. Caspase-13 or ERICE (Evolutionarily Related Interleukin-1 β Converting Enzyme) was recently described. When activated by caspase-8, caspase-13 induces apoptosis. Caspase-13 is expressed in a variety of human tissues and cell lines.

SPECIFICATION SUMMARY

Antigen: Peptide corresponding to aa 91-105 of human caspase-13 (accession no. O75601).

Host Species: Rabbit

Stabilizers: None

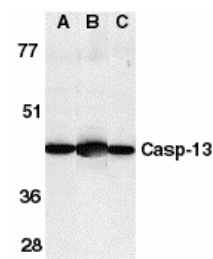
Preservatives: 0.02% sodium azide.

SPECIFICITY

This antibody recognizes human, mouse, and rat caspase-13 (43kDa).

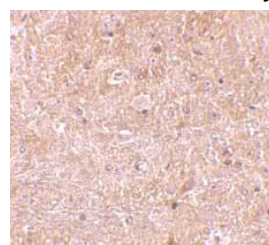
APPLICATIONS

Immunoblotting: use at 1ug/ml.



Western blot analysis of Caspase-13 in (A) HL60 cell lysate, (B) mouse brain and (C) rat brain tissue lysates with Caspase-13 antibody at 1ug/ml.

Immunohistochemistry: use at 10ug/ml.



Immunohistochemical staining of Caspase-13 in mouse brain tissue with Caspase-13 antibody at 10ug/ml.

These are recommended concentrations.

Endusers should determine optimal concentrations for their applications.

Positive control: Whole cell lysate from HL60 cells.

DILUTION INSTRUCTIONS

Dilute in PBS or medium which is identical to that used in the assay system.

STORAGE AND STABILITY

This antibody is stable for at least one (1) year at -20°C. Avoid multiple freeze-thaw cycles.

For in vitro investigational use only. Not for use in therapeutic or diagnostic procedures.