

Anti-BAFF (CT) Antibody

ORDERING INFORMATION

Catalog No.: 2221

Size: 100ug IgG in 200 ul PBS, pH 7.4, purified by immunoaffinity chromatography.

BACKGROUND

A novel member of the TNF superfamily was recently identified and designated BAFF (B Cell Activating Factor of the TNF Family) or BlyS (B Lymphocyte Stimulator), TALL-1 (TNF- and ApoL-Related Leukocyte-Expressed Ligand), and THANK (TNF Homologue that Activates Apoptosis, NF- κ B and c-jun N-terminal Kinase). BAFF is designated a B cell stimulator since it induces B cell proliferation and immunoglobulin secretion. BAFF and its receptors are involved in the development of systemic lupus erythematosus and other B cell-associated autoimmune diseases.

SPECIFICATION SUMMARY

Antigen: Peptide corresponding to aa 254-269 at the C-terminus of human BAFF.

Host Species: Rabbit

Stabilizers: None

Preservatives: 0.02% sodium azide.

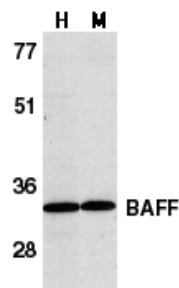
SPECIFICITY

This antibody recognizes human, mouse, and rat BAFF (approx. 38kDa).

For in vitro investigational use only. Not for use in therapeutic or diagnostic procedures.

APPLICATIONS

Immunoblotting: use at 1ug/ml.



Western blot analysis of BAFF in human HL60 cell lysate (H) and murine spleen tissue lysate (M) with BAFF antibody at 1 μ g/ml.

Immunocytochemistry: use at 1ug/ml.



Immunocytochemical staining of BAFF in HL60 cells with BAFF antibody at 1 μ g/ml.

These are recommended concentrations. Enduser should determine optimal concentration for their application.

Positive control: Whole cell lysate from HL60 cells.

DILUTION INSTRUCTIONS

Dilute in PBS or medium which is identical to that used in the assay system.

STORAGE AND STABILITY

This antibody is stable for at least one (1) year at -20°C. Avoid multiple freeze-thaw cycles.