

Anti-RICK (CT) Antibody

ORDERING INFORMATION

Catalog No.: 2183

Size: 100ug IgG in PBS, pH 7.4, purified by immunoaffinity chromatography.

BACKGROUND

A CARD-containing serine/threonine kinase has been identified and designated RICK/RIP2/CARDIAK for RIP-like interacting CLARP kinase, receptor interacting protein-2, and CARD-containing ICE associated kinase, respectively. RICK contains an N-terminal kinase catalytic domain and a C-terminal CARD domain. Overexpression of RICK induces apoptosis and activates NF- κ B and JNK. RICK interacts with members of the TRAF family, CLARP, and caspase-1. RICK regulates TNF and Fas induced-apoptosis and is involved in the generation of the proinflammatory cytokine IL-1 β . The mRNA of RICK is expressed in many human tissues.

SPECIFICATION SUMMARY

Antigen: Synthetic peptide corresponding to aa 508-522 of human RICK (accession no. AF027706).

Host Species: Rabbit

Stabilizers: None

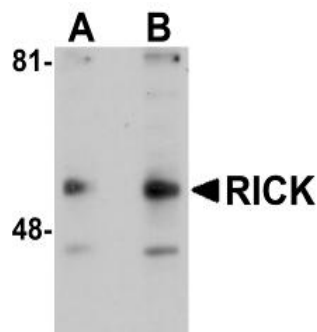
Preservatives: 0.02% sodium azide.

SPECIFICITY

This antibody recognizes human, mouse, and rat RICK (60kDa).

APPLICATIONS

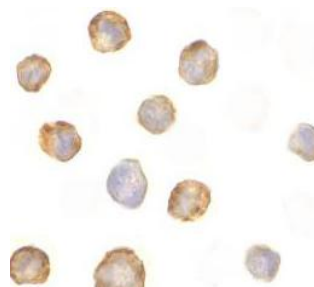
Immunoblotting : use at 1-2ug/ml.



Western blot analysis of RICK in A431 cell lysate with RICK antibody at (A) 1 and (B) 2 μ g/ml.

Positive control: A431 cell lysate.

Immunocytochemistry: use at 5ug/ml.



Immunocytochemical staining of RICK in K562 cells with RICK antibody at 5 μ g/ml.

DILUTION INSTRUCTIONS

Dilute in PBS or medium which is identical to that used in the assay system.

STORAGE AND STABILITY

This antibody is stable for at least one (1) year at -20°C. Avoid multiple freeze-thaw cycles.

For in vitro investigational use only. Not for use in therapeutic or diagnostic procedures.