

## Anti-CIDE-A (CT) Antibody

### ORDERING INFORMATION

**Catalog No.:** 2085

**Size:** 100ug IgG in PBS, pH 7.4, purified by immunoaffinity chromatography.

### BACKGROUND

DFF45-related proteins CIDE-A and CIDE-B (for cell death-inducing DFF-like effector A and B) were recently identified. CIDE contains a new type of domain termed CIDE-N which has high homology with the regulatory domains of DFF45/ICAD and DFF40/CAD. Expression of CIDE-A induces DNA fragmentation and activates apoptosis which is inhibited by DFF45. CIDE-A is expressed in many tissues

### SPECIFICATION SUMMARY

**Antigen:** Peptide corresponding to aa 200-217 of human CIDE-A (accession no. AF041378)

**Host Species:** Rabbit

**Stabilizers:** None

**Preservatives:** 0.02% sodium azide.

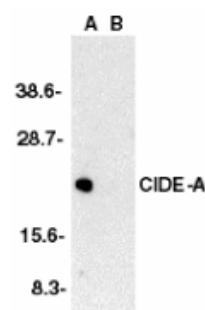
### SPECIFICITY

This antibody recognizes human CIDE-A (23kDA) and does not cross-react with CIDE-B.

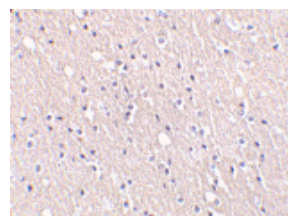
### APPLICATIONS

*Immunoblotting:* use at 0.5ug/ml.

*Immunohistochemistry:* use at 5ug/ml.



Western blot analysis of CIDE-A in human brain tissue lysate in the absence (A) or presence (B) of immunogenic peptide with CIDE-A antibody at 0.5ug/ml.



Immunohistochemical staining of CIDE-A in human brain tissue with CIDE-A antibody at 5μg/ml.

These are recommended concentrations.

Enduser should determine optimal concentrations for their applications.

*Positive control:* Human brain tissue lysate.

### DILUTION INSTRUCTIONS

Dilute in PBS or medium which is identical to that used in the assay system.

### STORAGE AND STABILITY

This antibody is stable for at least one (1) year at -20°C. Avoid multiple freeze-thaw cycles.

*For in vitro investigational use only. Not for use in therapeutic or diagnostic procedures.*