

Human Endothelin Monoclonal Antibodies

ORDERING INFORMATION

Catalog Nos.: 19401 through 19404

Size: 100ug Protein G-purified antibody in PBS, pH 7.4.

SPECIFICATION SUMMARY

Antigen: Human endothelin-1 (ET-1).

Gene ID: 1906 **Accession no.:** P05305

Host Species: Mouse

Antibody Class: IgG1

Clone Nos.: 19401 = 20-2101.70

19402 = 20-2111.41

19403 = 20-2125.4

19404 = 20-2201.1

DILUTION INSTRUCTIONS

Dilute in PBS or medium that is identical to that used in the assay system

STORAGE AND STABILITY

These antibodies are stable for at least one (1) year at -20°C to -70°C. Store

product in appropriate aliquots to avoid multiple freeze-thaw cycles.

ACTIVITY AND SPECIFICITY

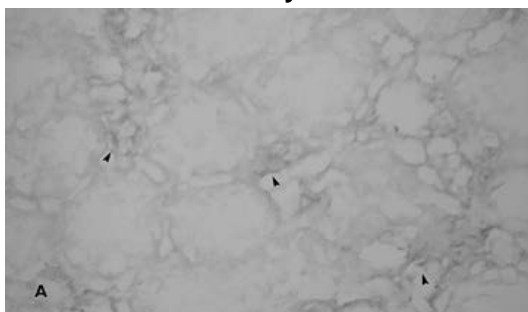
Competitive RIA

Antibody Concentrations (pg/tube) for 50% B/B₀^a

<u>In the presence of:</u>	<u>19401</u>	<u>19402</u>	<u>19403</u>	<u>19404</u>
Endothelin-1	2 x 10 ²	2 x 10 ¹	1 x 10 ¹	8 x 10 ¹
Endothelin-2	2 x 10 ²	2 x 10 ⁰	4 x 10 ⁰	8 x 10 ¹
Endothelin-3	2 x 10 ⁴	1 x 10 ³	1 x 10 ³	2 x 10 ³
Big Endothelin	0*	2 x 10 ⁰	4 x 10 ⁰	0*
Endothelin C-terminal hexapeptide		0*	0*	
Atrial natriuretic peptide		0*	0*	
Sarafotoxin S6c			2 x 10 ⁴	
Angiotensin I		0*		
Angiotensin II		0*		

*No displacement with antibody at 10⁵ pg/tube.

Immunohistochemistry:



Paraffin-embedded rat kidney exposed to 60 minutes of ischemia. ET-1 expression is seen in the endothelium of the peritubular capillary network (arrows, dark reaction product) with #19401 at 5-20ug/ml. *Wilhelm SM et al. 1999 Kidney International 55: 1011-1018.*

ELISA: use at 5-20ug/ml with endothelin-1 on the solid phase.

These are recommended concentrations. Endusers should determine optimal concentrations for their applications.

For in vitro investigational use only. Not for use in therapeutic or diagnostic applications.