

## T7 Affinity-Purified Polyclonal Antibody

### ORDERING INFORMATION

| Catalog No. | Size  |
|-------------|-------|
| 18864       | 1mg   |
| 18864-01    | 100ug |

**Format:** 1mg/ml in Phosphate Buffered Saline (PBS), pH 7.2, 0.09% sodium azide.

### BACKGROUND

The T7 tag is an 11 amino acid peptide (MASMTGGQQMG) derived from the leader sequence of T7 bacteriophage gene10 which encodes a T7 major capsid protein. The T7 tag serves as a tag in many expression vectors, and antibodies specific for the T7 tag are useful for identifying and isolating T7-tagged proteins.

### SPECIFICATION SUMMARY

**Antigen:** T7 (MASMTGGQQMG) conjugated to KLH.

**Host Species:** Rabbit

**Specificity:** Antibody was affinity-purified on the peptide.

### APPLICATIONS

**Immunoblotting:** use at a dilution of 1:1,000-1:20,000.

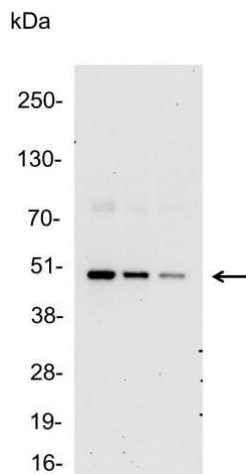
**Immunocytochemistry:** use at a dilution of 1:100-1:400.

**Immunoprecipitation:** use 1-4ug/mg lysate.

**ELISA:** for detection use at a dilution of 1:1,000-1:30,000; for coating use at a dilution of 1:100-1:500.

These are recommended dilutions.

Endusers should determine optimal dilutions for their applications.



Detection of T7-tagged fusion protein in 200, 100, and 50ng of E. coli lysate with #18864 diluted 1:25,000.

### DILUTION INSTRUCTIONS

Dilute in PBS or medium that is identical to that used in the assay system.

### STORAGE AND STABILITY

This antibody is stable for at least one (1) year at 2-8°C.

*For in vitro investigational use only. Not for use in therapeutic or diagnostic procedures.*