

## KT3 Affinity-Purified Polyclonal Antibody

### ORDERING INFORMATION

Catalog No.	Size
18854	1mg
18854-01	100ug

**Format:** 1mg/ml in Phosphate Buffered Saline (PBS), pH 7.2, 0.09% sodium azide.

### BACKGROUND

The KT3 epitope tag is derived from SV40 large T antigen and corresponds to amino acids KPPTPPPEPET. It is frequently used as an epitope tag in expression vectors.

### SPECIFICATION SUMMARY

**Antigen:** KT3 (KPPTPPPEPET) conjugated to KLH.

**Host Species:** Goat

**Specificity:** Antibody was affinity-purified on the peptide.

### APPLICATIONS

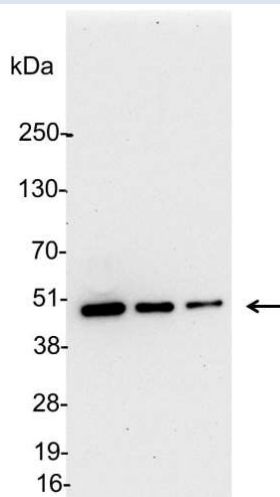
**Immunoblotting:** use at a dilution of 1:1,000-1:20,000.

**Immunocytochemistry:** use at a dilution of 1:100-1:400.

**Immunoprecipitation:** use 1-4ug/mg lysate.

**ELISA:** for detection use at a dilution of 1:1,000-1:30,000; for coating use at a dilution of 1:100-1:500.

These are recommended dilutions.  
Endusers should determine optimal dilutions for their applications.



Detection of KT3-tagged fusion protein in 200, 100, and 50ng of E. coli cell lysate with 18854 diluted 1:5,000.

### DILUTION INSTRUCTIONS

Dilute in PBS or medium that is identical to that used in the assay system.

### STORAGE AND STABILITY

This antibody is stable for at least one (1) year at 2-8°C.

*For in vitro investigational use only. Not for use in therapeutic or diagnostic procedures.*