

Hemagglutinin (HA) Affinity-Purified Polyclonal Antibody

ORDERING INFORMATION

Catalog No.	Size
18850	1mg
18850-01	100ug

Format: 1mg/ml in Phosphate Buffered Saline (PBS), pH 7.2, 0.09% sodium azide.

BACKGROUND

The HA epitope tag is derived from the HA-molecule corresponding to amino acids YPYDVPDYA of human influenza hemagglutinin. It is frequently used as an epitope tag in expression vectors. Many recombinant proteins have been engineered to express the HA tag, which does not appear to interfere with the bioactivity or the biodistribution of the recombinant protein.

SPECIFICATION SUMMARY

Antigen: HA (YPYDVPDYA) conjugated to KLH.

Host Species: Rabbit

Specificity: Antibody was affinity-purified on the peptide.

APPLICATIONS

Immunoblotting: use at a dilution of 1:1,000-1:20,000.

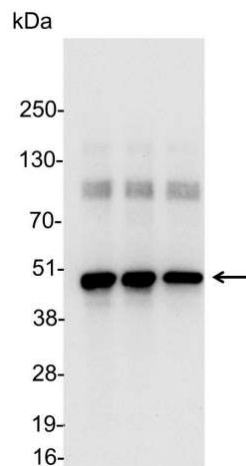
Immunocytochemistry: use at a dilution of 1:100-1:400.

Immunoprecipitation: use 1-4ug/mg lysate.

ELISA: for detection use at a dilution of 1:1,000-1:30,000; for coating use at a dilution of 1:100-1:500.

These are recommended dilutions.

Endusers should determine optimal dilutions for their applications.



Detection of HA-tagged fusion protein in 200, 100, and 50ng of E. coli cell lysate with 18850 diluted 1:25,000.

DILUTION INSTRUCTIONS

Dilute in PBS or medium that is identical to that used in the assay system.

STORAGE AND STABILITY

This antibody is stable for at least one (1) year at 2-8°C.

For in vitro investigational use only. Not for use in therapeutic or diagnostic procedures.