

Glu-Glu (EYMPME) Affinity-Purified Polyclonal Antibody, HRP Conjugate

ORDERING INFORMATION

Catalog No.	Size
18838P	1mg

Format: 1mg/ml conjugated to horseradish peroxidase (HRP) in Phosphate Buffered Saline (PBS), 0.2% BSA, 0.1% Pro-Clean 400. Molar enzyme/antibody ratio = 4:1.

BACKGROUND

The Glu-Glu tag represents the peptide sequence EYMPME which is derived from the middle T antigen of mouse polyoma virus. Given the small size of this peptide, it is unlikely that modifying proteins with it will affect protein structure or function.

SPECIFICATION SUMMARY

Antigen: Synthetic peptide corresponding to aa 314-319 (EYMPME) of middle T antigen of mouse polyomavirus conjugated to KLH.

Host Species: Rabbit

Specificity: Antibody was affinity-purified on the peptide.

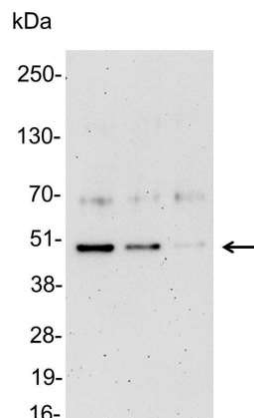
APPLICATIONS

Immunoblotting: use at a dilution of 1:1,000-1:30,000.

Immunocytochemistry: use at a dilution of 1:200-1:500.

ELISA: use at a dilution of 1:10,000-1:100,000.

These are recommended dilutions.
Endusers should determine optimal dilutions for their applications.



Detection of Glu-Glu-tagged protein in *E. coli* lysate containing 200, 100, and 50ng of tagged protein with #18838P diluted 1:5,000.

DILUTION INSTRUCTIONS

Dilute in PBS or medium that is identical to that used in the assay system.

STORAGE AND STABILITY

This antibody is stable for at least one (1) year at 2-8°C.

For in vitro investigational use only. Not for use in therapeutic or diagnostic procedures.